

xpress

Sortimo®
Intelligent Mobility



FORD OUTSIDE – SORTIMO INSIDE

Made for professionals



Eine Idee weiter



ICONS + FEATURES

Xpress

Time is money – Fast delivery and installation are guaranteed.

3
YEARS

3 years warranty – Sortimo offers a 3 year guarantee on these products.

UPGRADE

Upgrade – This very flexible product can be individually combined with other Sortimo products.

CRASHTESTED

Crash tested – This product fulfills the high safety requirements of Sortimo. In co-ordination with the German TÜV, DEKRA and the ADAC, the equipment has been successfully crash-tested in simulated emergencies.

LIGHTWEIGHT & TOUGH

Lightweight yet robust – This product combines modern lightweight construction with utmost stability.

PROSAFE

ProSafe – The lashing point for the ProSafe hooks are already integrated in the equipment and quickly ready for use.

LOW CO₂

CO₂ reduction – Based on modern lightweight construction, the weight of the equipment has been considerably reduced to save on petrol and reduce CO₂ emissions.

FORD AND SORTIMO – COMPREHENSIVELY CARE-FREE

Buying a vehicle is a matter of trust

You have chosen a FORD CV because you set value on quality and individual benefits. But quality and individual benefit should not know any boundaries. This is why Sortimo is exactly the right choice if you wish for a van racking solution. We open up new horizons with intelligent solutions for your individual requirements.

Your benefits

We have perfectly fitted equipment for your transporter, because we develop our solutions together with Ford. The Sortimo shelves are tailored to exactly match the already existing fastening points in your vehicle. Therefore you no longer have to put up with any damage to the body of your transporter.

Individually for you, perfect fit for your Ford.

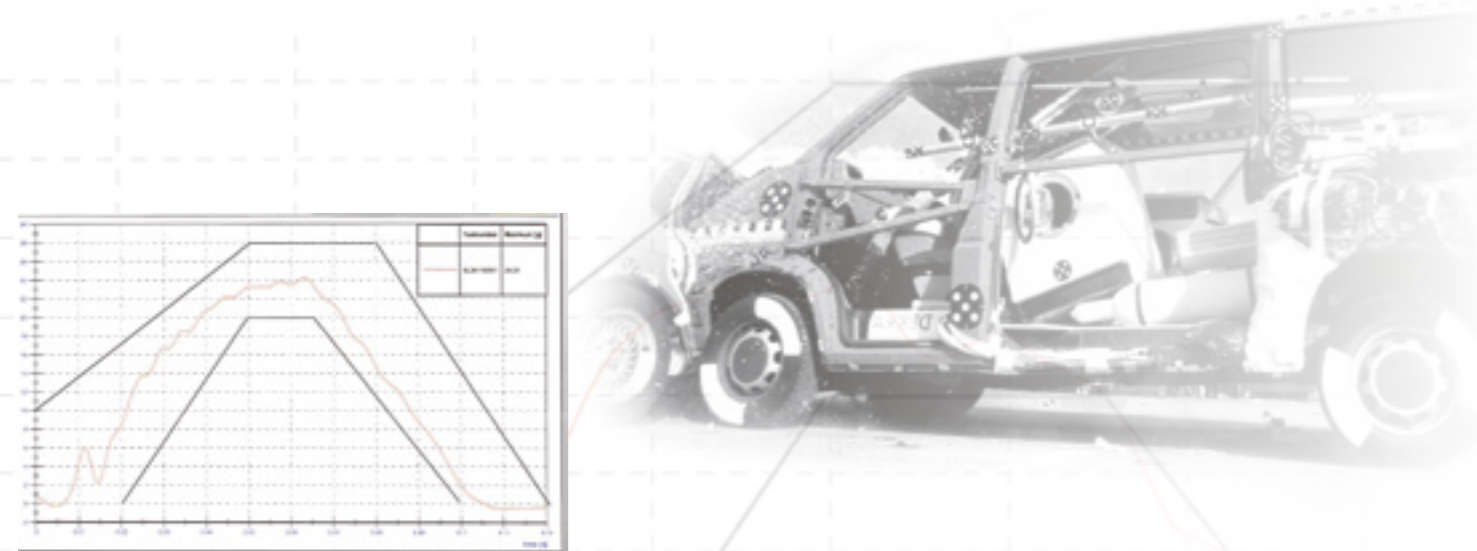
CRASH TEST

We've driven our products into the wall - successfully

All Sortimo van racking solutions have been crash tested. In co-operation with the German TÜV, Dekra and ADAC, Sortimo simulates the emergency under real conditions, so that your load won't become a life-threatening projectile in case of a crash.

At a barrier impact speed of 50 km/h, the Sortimo products are literally driven into the wall. This way we ensure that our van racking solutions also meet the high demands of Sortimo when it comes to safety.

Only those which pass their on-road test are good enough for our customers.



OUR PACKAGE FOR YOU

We open up new horizons for your requirements and your Ford with convenient van racking solutions.



GLOBELYST XPRESS from page 8

Globelyst scores with its modular system, which can be changed or extended as you wish, at any time. **Xpress** describes van racking solutions of the Globelyst product line, which **perfectly fit to your Ford Connect, Transit or Custom** and are delivered and installed in Xpress time.



PROSAFE

With the **ProSafe lashing system** both you and your transport are safe on the road. The integrated load securing system ProSafe from Sortimo enables a **quick and easy lashing of loads** and thereby provides not only for safety but also for order and an efficient operational management.

Since 2014 Sortimo offers in addition as sole manufacturer an entire load securing package as a complete solution for your Transporter with its **SoboGrip ProSafe floor**.

Further information can be found on **page 24**.

SIMPLECO from page 32

The clever solution for your Connect for **self-assembly**. The shelves are suspended from above so that there is still sufficient space for pallets and bulky loads in the floor area, even in a versatile small van.

Your advantage: The order is made **quickly and easily through the simpleco shop** and is delivered to you within a short time. Take a look at simpleco for yourself from **page 32** onwards.



from page 24

THE PACKAGE:

Predefined van racking solution with maximum use of space

- + attractive price-performance ratio
- + everything from a single source

With the **Sortimo load safety system, the BOXxes and the case programme**, as well as with the extensive **Original Accessories** your individuality does not have set boundaries.

You can find further information on this from **page 24 to 31**.

from page 24-31

GLOBELYST – YOUR ADVANTAGES



**QUALITY
MADE IN
GERMANY**

1. Cost savings

Keep on driving. While others are still refueling, you are on your way to the next customer.

2. Time savings

No need for you to work extra hours. More than 50% of your colleagues are unproductively wasting more than one hour a day in their transporter. Be smarter. From now on, tools left behind, damaged goods and cluttered small parts are a thing of the past.

3. Load Safety

ProSafe – The safety belt for both your cargo and your life. Integrated load safety – as standard for the first time.

4. Flexibility

Have everything your own way, we are accommodating your requirements. At Sortimo, you are the designer for your van racking system and you decide where your tools, machines and goods are safely stowed. All individual components can be freely combined.

5. Lightweight construction

Keep on loading. Consistent lightweight construction allows you to add more payload. Compared to conventional van racking solutions, Globelyst saves up to 50% weight. Go and compare for yourself!

6. Innovative

That's just who we are, we can't do it any other way. For over 40 years now, we have been investing in future-oriented technologies and are developing innovative solutions to make your work easier. Go and decide for yourself!

7. Quality

Durable – sturdy – tested – sustainable. We are regularly conducting crash tests and quality checks for your safe investment. All drawer bodies and trays are made from highly-durable sheet steel, and are powder-coated to guarantee permanent corrosion protection and rule out any risk of injury from sharp edges. Made in Germany.

8. Image

It is like in a personal relationship: first impressions count. Show your customer that you are a professional. Your transporter is the business card of your company.

GLOBELYST - AT A GLANCE

Xpress

Composite long components tray

The long components tray allows you to transport longer items in the vehicle without any problem.

Sortimo S-BOXX

Sortimo's S-BOXXes are available in four heights, two widths and three depths. They are the ideal container for small components, spare parts or screws and can be securely locked on the shelf. You can pull the drawer out for easy access to all parts.

Sortimo i-BOXX

The i-BOXXes from Sortimo are clever little storage solutions that can be used on their own or as part of the LS-BOXX. They are available in two heights and can be fitted with Inset boxes.

Sortimo Accessories

Original accessories from Sortimo are practical supplementary products for all trades and industries. From the cable holder to the cable hook – Sortimo will fulfil your requirements.

Racks and trays

Up to the last corner, the space in your vehicle can be utilised: Tools and spare parts can be neatly arranged in the racks and trays of Globelyst.

Floor Front

Floor fronts provide for order, visual cover and safety in the vehicle.

i-BOXX Adaptor plate

Your i-BOXX is securely locked in place during transport with the aid of the i-BOXX holder. The holder can be screwed to the perforated side panel or to the vehicle itself.

Shutter

With the shutter made out of hollow-chamber profiles, load safety and visual cover takes only one movement. The optional lock provides additional protection against unauthorized access.

ProSafe

The load safety system is integrated into the poles and traverses of the van racking solution.

Sortimo L-BOXX and LS-BOXX

Mobile plastic boxes with a wide variety of possible partitions, available in five heights. L-BOXXes can be quickly click-joined with each other and transported as one.

Sortimo T-BOXX

Thanks to the practical plastic case with the transparent lid you can see right away what is in the BOXX. The T-BOXX can be safely stored in the vehicle equipment.

Sortimo M-BOXX

A large mobile box with handle, also available with a lid. The M-BOXX locks in the system and can also be used as a drawer.

Metal case

The original case is available in many different variants. The case is on rails and can be pulled out completely.

Drawers

The new drawers with their user-friendly handles made from impact-resistant plastic are fully extendible and can be loaded with up to 80 kg. They are available in four different widths and heights.

Workbenches

Sortimo workbenches turn your van into a mobile workshop. Both, folding and extendible workbenches are available and can be supplemented with a rotating vice plate and a vice.

Case clamp

Secures tool and machine cases and can be positioned in no time.

MultiSlide

The MultiSlide allows an easy handling of all cases and BOXXes. With the full-extension slide the lids can be opened completely and small parts and tools can be accessed quickly.

Safety and protective floors

The basis for your van racking system is the safety or protective floor. You can choose between a variety of floors. The floors are cut to size for different vehicle models, offer integrated lashing possibilities and protect the vehicle floor from damage.

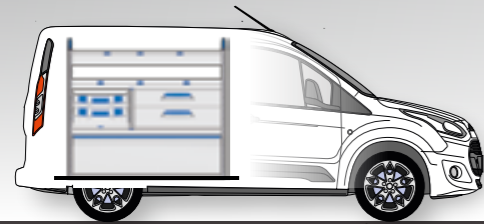
FORD TRANSIT CONNECT BLOCKS

WHEELBASE: 2662 mm | MODEL YEAR 2014 | WITH WHEEL HOUSE CASING

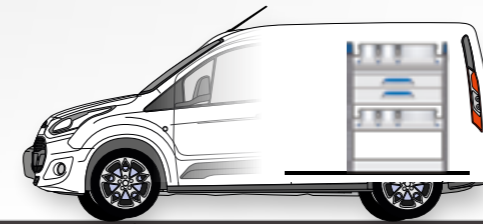


1

Step 1: Select the suitable equipment.



LEFT SIDE
(DRIVERS SIDE)



RIGHT SIDE
(PASSENGERS SIDE)



CO 14 KU LI-1 RV

- ▶ 2 shelf trays
- ▶ 1 shelf with 7 S-BOXEs
- ▶ 1 base plinth

▶ WxDxH: approx. 1246 x 382 x 1085 mm
Weight: approx. 27 kg



CO 14 KU LI-2 RV

- ▶ 1 shelf tray
- ▶ 1 open shelf with drop front
- ▶ 1 T-BOX on case rail
- ▶ 1 shelf with border
- ▶ 1 floor drop front

▶ WxDxH: approx. 1246 x 382 x 1085 mm
Weight: approx. 31 kg



CO 14 KU LI-3 RV

- ▶ Spaceframe with integrated ProSafe lashing system
- ▶ 2 shelf trays
- ▶ 1 drawer
- ▶ 1 T-BOX on case rail
- ▶ 1 lifting flap
- ▶ 1 floor lashing rail ProSafe

▶ WxDxH: approx. 1246 x 382 x 1085 mm
Weight: approx. 35 kg



CO 14 KU RE-1 RV

- ▶ 2 shelf trays
- ▶ 1 open shelf with 4 half-height S-BOXEs
- ▶ 1 base plinth

▶ WxDxH: approx. 762 x 382 x 1000 mm
Weight: approx. 20 kg



CO 14 KU RE-2 RV

- ▶ 1 shelf trays
- ▶ 1 drawer
- ▶ 2 open shelves with 2 S-BOXEs and 1 wide S-BOX
- ▶ 1 floor drop front

▶ WxDxH: approx. 762 x 382 x 1000 mm
Weight: approx. 24 kg



CO 14 KU RE-3 RV

- ▶ Spaceframe with integrated ProSafe lashing system
- ▶ 2 shelf trays
- ▶ 1 drawer
- ▶ 1 lifting flap
- ▶ 1 floor lashing rail ProSafe
- ▶ 1 folding work bench with vice
- ▶ 1 storage pocket

▶ WxDxH: approx. 982 x 382 x 1000 mm
Weight: approx. 44 kg



FORD TRANSIT CONNECT BLOCKS

WHEELBASE: 2662 mm | MODEL YEAR 2014 | WITHOUT WHEEL HOUSE CASING

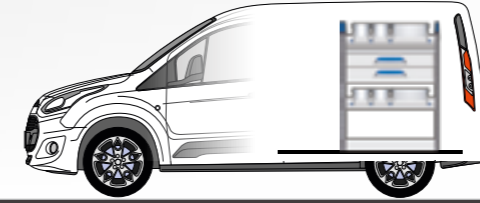


1

Step 1: Select the suitable equipment.



LEFT SIDE
(DRIVERS SIDE)



RIGHT SIDE
(PASSENGERS SIDE)



CO 14 KU LI-1

- ▶ 2 shelf trays
- ▶ 1 open shelf with 7 S-BOXXes
- ▶ 1 base plinth

▶ WxDxH: approx. 1246 x 382 x 1085 mm
Weight: approx. 27 kg



CO 14 KU LI-2

- ▶ 1 shelf tray
- ▶ 1 open shelf with drop front
- ▶ 3 T-BOXXes on case rail
- ▶ 1 shelf with border
- ▶ 1 floor drop front

▶ WxDxH: approx. 1246 x 382 x 1085 mm
Weight: approx. 36 kg



CO 14 KU LI-3



- ▶ Spaceframe with integrated ProSafe lashing system
- ▶ 1 shelf tray
- ▶ 2 drawers
- ▶ 1 L-BOXX 102 and 1 L-BOXX 136 on multi slide
- ▶ 1 shelf with border
- ▶ 1 lifting flap
- ▶ 1 floor lashing rail ProSafe

▶ WxDxH: approx. 1246 x 382 x 1085 mm
Weight: approx. 46 kg



CO 14 KU RE-1

- ▶ 2 shelf trays
- ▶ 1 open shelf 4 half-height S-BOXXes
- ▶ 1 base plinth

▶ WxDxH: approx. 762 x 382 x 1000 mm
Weight: approx. 20 kg



CO 14 KU RE-2

- ▶ 1 shelf tray
- ▶ 1 drawer
- ▶ 1 open shelf with 4 half-height S-BOXXes
- ▶ 1 open shelf with 2 S-BOXXes and 1 wide S-BOXX
- ▶ 1 floor drop front

▶ WxDxH: approx. 762 x 382 x 1000 mm
Weight: approx. 25 kg



CO 14 KU RE-3



- ▶ Spaceframe with integrated ProSafe lashing system
- ▶ 1 shelf tray
- ▶ 2 drawers
- ▶ 1 shelf with border
- ▶ 1 lifting flap
- ▶ 1 floor lashing rail ProSafe
- ▶ 1 folding work bench with vice
- ▶ 1 storage pocket

▶ WxDxH: approx. 982 x 382 x 1000 mm
Weight: approx. 50 kg

FORD TRANSIT CONNECT FLOOR-WALL

WHEELBASE: 2662 mm | MODEL YEAR 2014

2

Step 2: Select the appropriate floor.



SOBOGRIP®-PROTECTIVE FLOOR

► the protective floor for tough conditions

| Vehicle model | Wheelbase | Version | Article No. |
|---------------|-----------|-------------------------|-------------|
| ► Connect L1 | 2662 mm | Sliding door right side | 1000002597 |
| Connect L2 | 3062 mm | Sliding door right side | 1000002535 |

- Floor made of waterproof glued Nordic birch
- 9 mm protective floor
- Highly scratch and impact resistant
- Custom-fit to your vehicle
- No drilling of the vehicle floor necessary

SOBOGRIP® PROSAFE FLOOR

► the entire load securing package

| Vehicle model | Wheelbase | Roof | Article No. |
|---------------|-----------|------|-------------|
| ► Connect L1 | 2662 mm | H1 | 1000003061 |
| ► Connect L2 | 3062 mm | H1 | 1000003119 |

All benefits of the SoboGrip protective assembly floor
+ multitude of countersunk lashing possibilities

3

Step 3: Select the appropriate side cladding.

SOWAFLEX®

► the lightweight & sturdy wall cladding

- Protects the vehicle from the inside against damages
- Highly impact and scratch resistant
- Damp and chemical resistant
- Cut-to-size for all vehicle models
- 100% recyclable honeycomb material
- 60% lighter than wood

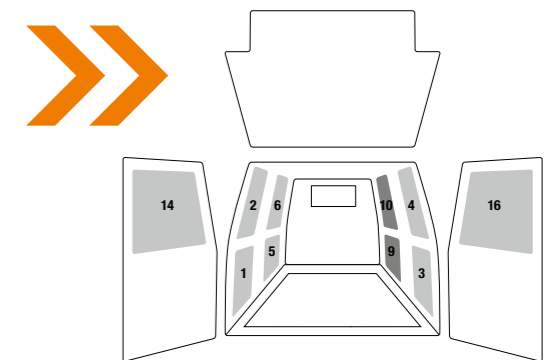
| Vehicle model | Wheelbase | Wall cladding | Article No. |
|-----------------|-----------|------------------------|-------------|
| ► Connect L1 | 2662 mm | Side cladding 1-6 | 1000002604 |
| ► Connect L1 | 2662 mm | Side cladding 2/4/5/6 | 1000002603 |
| ► Connect L1/L2 | 2662 mm | Wing door top 14/16 | 1000002539 |
| ► Connect L1/L2 | 2662 mm | Wing door bottom 13/15 | 1000002540 |
| ► Connect L1 | 2662 mm | Sliding door top 10 | 1000002596 |
| ► Connect L1 | 2662 mm | Sliding door bottom 9 | 1000002595 |
| ► Connect L2 | 3062 mm | Side cladding 1-6 | 1000002638 |
| ► Connect L2 | 3062 mm | Sliding door top 10 | 1000002538 |
| ► Connect L2 | 3062 mm | Sliding door bottom 9 | 1000002537 |

SOWAAPP®

► The extremely sturdy wall cladding made out of aluminium

- Protects the vehicle interior and serves at the same time as a clever fastening mechanism for a wide range of accessories such as hooks and perforated wall holders, thanks to its perforated system.
- Quickly installed due to fastening with clips and drilling screws on allocated points in vehicle.
- Moisture and chemical resistant
- Cut perfectly to size for your vehicle type.

AVAILABLE FROM
NOVEMBER 2014



Wall cladding selection

| Vehicle model | Wheelbase | Roof | Wall cladding | Article No. |
|---------------|--------------|------|--------------------------|-------------|
| ► Connect L1 | 2662 mm | H1 | Side cladding (1-6) | 1000003192 |
| ► Connect L2 | 3062 mm | H1 | Side cladding (1-6) | 1000003193 |
| ► Connect | 2933/3300 mm | H1 | Wing door top (14/16) | 1000003207 |
| ► Connect | 2933/3300 mm | H1 | Wing door bottom (13/15) | 1000003208 |

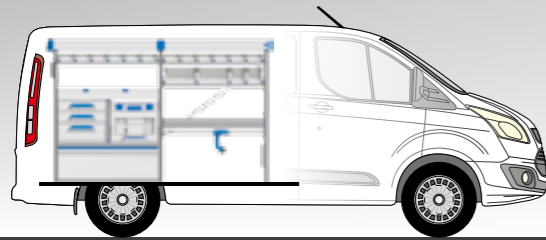
FORD TRANSIT CUSTOM BLOCKS

WHEELBASE: 2933 mm | MODEL YEAR 2012 | FRONT DRIVE

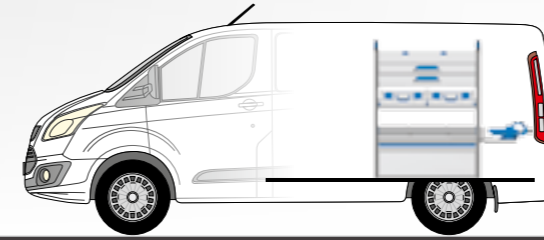


1

Step 1: Select the suitable equipment.



LEFT SIDE
(DRIVERS SIDE)



RIGHT SIDE
(PASSENGERS SIDE)



FOCU LI-1

- ▶ 4 shelf trays
- ▶ 1 shelf with 2 T-BOXXes
- ▶ 1 shelf with 2 S-BOXXes and 2 wide S-BOXXes
- ▶ 1 open shelf with drop front
- ▶ 2 base plinths
- ▶ 1 floor lashing rail ProSafe

▶ WxDxH: approx. 1972 x 382 x 1325 mm
Weight: approx. 56 kg



FOCU LI-2

- ▶ 4 shelf trays
- ▶ 1 shelf with 2 S-BOXXes and 2 wide S-BOXXes
- ▶ 1 open shelf with border
- ▶ 2 drawers
- ▶ 1 T-BOXX on case rail
- ▶ 1 L-BOXX 136 on MultiSlide
- ▶ 2 floor drop fronts
- ▶ 1 floor lashing rail ProSafe

▶ WxDxH: approx. 1972 x 382 x 1325 mm
Weight: approx. 67 kg



FOCU LI-3

- ▶ Spaceframe with integrated ProSafe lashing system
- ▶ 1 composite long components tray
- ▶ 2 shelves with 6 half-height S-BOXXes
- ▶ 1 shelf with 2 S-BOXXes and 2 wide S-BOXXes
- ▶ 1 shelf tray, 3 drawers
- ▶ 1 LS-BOXX on MultiSlide
- ▶ 1 open shelf with drop front
- ▶ 1 lifting flap, 1 case clamp
- ▶ 1 floor lashing rail ProSafe

▶ WxDxH: approx. 1972 x 382 x 1325 mm
Weight: approx. 78 kg



FOCU RE-1

- ▶ 2 shelf trays
- ▶ 1 shelf with 4 S-BOXXes and 1 wide S-BOXX
- ▶ 1 open shelf with border
- ▶ 1 base plinth
- ▶ 1 floor lashing rail ProSafe

▶ WxDxH: approx. 1004 x 382 x 1325 mm
Weight: approx. 32 kg



FOCU RE-2

- ▶ 2 shelf trays
- ▶ 3 drawers
- ▶ 2 T-BOXXes on case rails
- ▶ 1 L-BOXX 102 on MultiSlide
- ▶ 1 floor drop front
- ▶ 1 floor lashing rail ProSafe

▶ WxDxH: approx. 1004 x 382 x 1325 mm
Weight: approx. 44 kg



FOCU RE-3

- ▶ Spaceframe with integrated ProSafe lashing system
- ▶ 1 shelf tray
- ▶ 2 drawers
- ▶ 1 shelf with 2 L-BOXXes 136
- ▶ 1 open shelf with drop front
- ▶ 1 lifting flap
- ▶ 1 floor lashing rail ProSafe
- ▶ 1 workbench on work bench slide with vice

▶ WxDxH: approx. 1004 x 382 x 1325 mm
Weight: approx. 63 kg



FORD TRANSIT CUSTOM FLOOR-WALL

WHEELBASE: 2933 mm | MODEL YEAR 2012 | FRONT DRIVE

2

Step 2: Select the appropriate floor.

SOBOGRIP®-PROTECTIVE FLOOR

► the protective floor for tough conditions

| Vehicle type | Wheelbase | Roof | Article No. | |
|--------------|------------|-------|-------------|---|
| ► Custom L1 | 2933 mm L1 | H1/H2 | 1000001761 | <ul style="list-style-type: none"> • Floor made of waterproof glued Nordic birch • 9 mm protective floor • Highly scratch and impact resistant • Custom-fit to your vehicle • No drilling of the vehicle floor necessary |
| ► Custom L2 | 3300 mm L2 | H1/H2 | 1000001764 | |

SOBOGRIP® PROSAFE FLOOR

► the entire load securing package

| Vehicle type | Wheelbase | Roof | Article No. | |
|--------------|-----------|-------|-------------|--|
| ► Custom L1 | 2933 mm | H1/H2 | 1000003166 | All benefits of the SoboGrip protective assembly floor + multitude of countersunk lashing possibilities |
| ► Custom L2 | 3300 mm | H1/H2 | 1000003226 | |

3

Step 3: Select the appropriate side cladding.

SOWAFLEX®

► the lightweight & sturdy wall cladding

- Protects the vehicle from the inside against damages
- Highly impact and scratch resistant
- Damp and chemical resistant
- Cut-to-size for all vehicle models
- 100% recyclable honeycomb material
- 60% lighter than wood

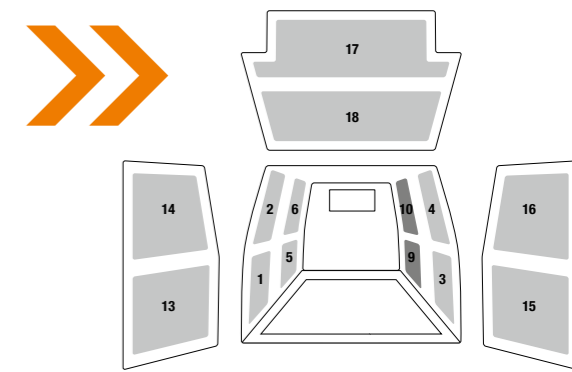
| Vehicle type | Wheelbase | Wall cladding | Article No. |
|----------------|--------------|--------------------------|-------------|
| ► Custom L1 | 2933 mm | Side cladding (1,3,5) | 1000001582 |
| ► Custom L1 | 2933 mm | Side cladding (2,4,6) | 1000001585 |
| ► Custom L1/L2 | 2933/3300 mm | Sliding door bottom (9) | 1000001584 |
| ► Custom L1/L2 | 2933/3300 mm | Sliding door top (10) | 1000001583 |
| ► Custom L1/L2 | 2933/3300 mm | Wing door bottom (13/15) | 1000001581 |
| ► Custom L1/L2 | 2933/3300 mm | Wing door top (14/16) | 1000001579 |
| ► Custom L2 | 3300 mm | Side cladding (1,3,5) | 1000001790 |
| ► Custom L2 | 3300 mm | Side cladding (2,4,6) | 1000001791 |
| ► Custom L1/L2 | 2933/3300 mm | Tailgate bottom (17) | 1000002081 |
| ► Custom L1/L2 | 2933/3300 mm | Tailgate top (18) | 1000002163 |

SOWAAPP®

► The extremely sturdy wall cladding made out of aluminium

- Protects the vehicle interior and serves at the same time as a clever fastening mechanism for a wide range of accessories such as hooks and perforated wall holders, thanks to its perforated system.
- Quickly installed due to fastening with clips and drilling screws on allocated points in vehicle.
- Moisture and chemical resistant
- Cut perfectly to size for your vehicle type.

AVAILABLE FROM
NOVEMBER 2014



Wall cladding selection

| Vehicle type | Wheelbase | Roof | Wall cladding | Article No. |
|----------------|--------------|------|--------------------------|-------------|
| ► Custom L1 | 2933 mm | H1 | Side cladding (1-6) | 1000003190 |
| ► Custom L2 | 3300 mm | H1 | Side cladding (1-6) | 1000003191 |
| ► Custom L1/L2 | 2933/3300 mm | H1 | Wing door bottom (13/15) | 1000003171 |
| ► Custom L1/L2 | 2933/3300 mm | H1 | Wing door top (14/16) | 1000003206 |

FORD TRANSIT BLOCKS

WHEELBASE: 3300 mm | MODEL YEAR 2014 | FRONT DRIVE

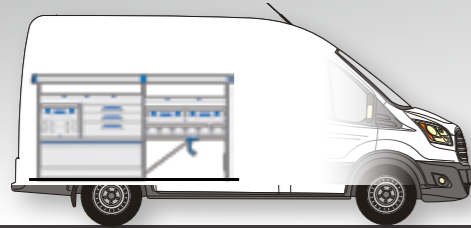
SET OF BOXXes ORIGINAL SORTIMO BOXXes + ADAPTER PLATE

Sortimo's adapter plate turns the L-BOXX into the smallest independent van racking solution for vans. The adapter plate is fastened to the loading area wall and ensures secure hanging of the L-BOXXes.



1

Step 1: Select the suitable equipment.



LEFT SIDE
(DRIVERS SIDE)



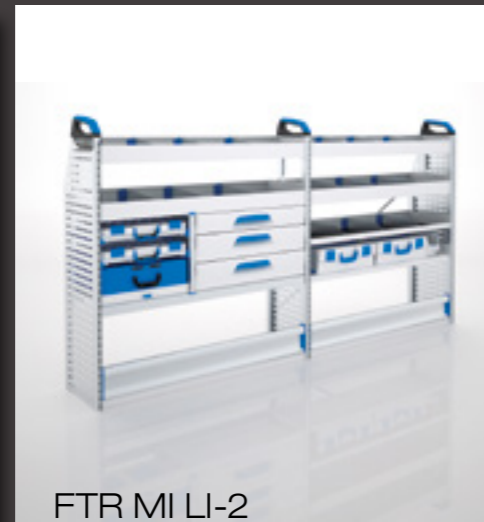
RIGHT SIDE
(PASSENGERS SIDE)



FTR MI LI-1

- ▶ 5 shelf trays
- ▶ 1 open shelf with border
- ▶ 1 open shelf with 7 S-BOXXes
- ▶ 2 base plinths

▶ WxDxH: approx. 2456 x 382 x 1308 mm
Weight: approx. 58 kg



FTR MI LI-2

- ▶ 4 shelf trays
- ▶ 2 T-BOXXes on case rails
- ▶ 1 metal case on case tray
- ▶ 3 drawers
- ▶ 1 open shelf with border
- ▶ 1 open shelf with 2 L-BOXXes 136 and 1 S-BOXX
- ▶ 2 floor drop fronts

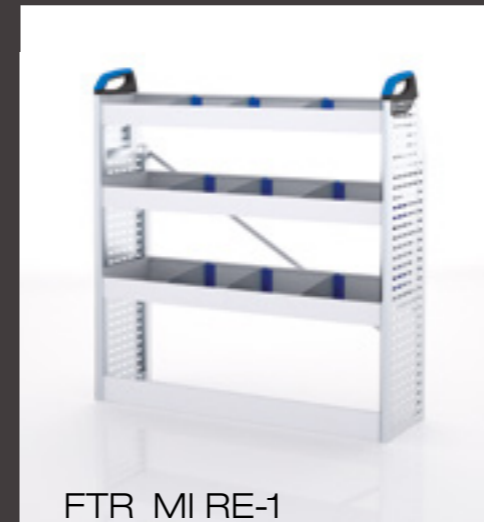
▶ WxDxH: approx. 2456 x 382 x 1308 mm
Weight: approx. 89 kg



FTR MI LI-3

- ▶ Spaceframe with integrated ProSafe lashing system
- ▶ 1 Composite long components tray
- ▶ 2 open shelves with border
- ▶ 1 LS-BOXX on case tray
- ▶ 2 drawers
- ▶ 1 open shelf with 7 S-BOXXes
- ▶ 1 open shelf with 7 half-height S-BOXXes
- ▶ 1 lifting flap, 1 base plinth
- ▶ 1 case clamp
- ▶ 1 floor lashing rail ProSafe

▶ WxDxH: approx. 2456 x 382 x 1205 mm
Weight: approx. 85 kg



FTR MI RE-1

- ▶ 3 shelf trays
- ▶ 1 base plinth

▶ WxDxH: approx. 1246 x 382 x 1308 mm
Weight: approx. 27 kg



FTR MI RE-2

- ▶ 2 shelf trays
- ▶ 3 drawers
- ▶ 1 L-BOXX 102 and 1 L-BOXX 238 on case tray
- ▶ 1 floor drop front

▶ WxDxH: approx. 1246 x 382 x 1308 mm
Weight: approx. 48 kg



FTR MI RE-3

- ▶ Spaceframe with integrated ProSafe lashing system
- ▶ 1 shelf tray
- ▶ 1 open shelf with border
- ▶ 3 drawers
- ▶ 1 LS-BOXX on case tray
- ▶ 1 lifting flap
- ▶ 1 base plinth
- ▶ 1 floor lashing rail ProSafe
- ▶ 1 storage pocket
- ▶ 1 folding work bench with vice

▶ WxDxH: approx. 1466 x 382 x 1325 mm
Weight: approx. 76 kg



FORD TRANSIT FLOOR-WALL

WHEELBASE: 3300 mm | MODEL YEAR 2014 | FRONT DRIVE

2

Step 2: Select the appropriate floor.



SOBOGRIP®-PROTECTIVE FLOOR

► the protective floor for tough conditions

| Vehicle type | Wheelbase | Roof | Version | Article No. | |
|----------------------------|------------|-------|-------------------------|-------------|---|
| ► Transit L2 / Front drive | 3300 mm | H2/H3 | Sliding door right side | 1000002680 | <ul style="list-style-type: none"> • Floor made of waterproof glued Nordic birch • 9 mm protective floor • Highly scratch and impact resistant • Custom-fit to your vehicle • No drilling of the vehicle floor necessary |
| ► Transit L2 / Rear drive | 3300 mm | H2 | Sliding door right side | 1000002873 | |
| ► Transit L3 / Front drive | 3750 mm L1 | H2/H3 | Sliding door right side | 1000002649 | |
| ► Transit L3 / Rear drive | 3750 mm L2 | H2/H3 | Sliding door right side | 1000002760 | |

SOBOGRIP® PROSAFE FLOOR

► the entire load securing package

| Vehicle type | Wheelbase | Roof | Article No. |
|--------------|------------|-------|-------------|
| ► Transit L2 | 3300 mm | H2/H3 | 1000002720 |
| ► Transit L3 | 3750 mm L1 | H2/H3 | 1000003227 |
| ► Transit L4 | 3750 mm L2 | H2/H3 | 1000003228 |

All benefits of the SoboGrip protective assembly floor
 + multitude of countersunk lashing possibilities

3

Step 3: Select the appropriate side cladding.

PLEASE COMPLETE THE ORDER FORM AND FAX IT TO SORTIMO

(see second last page)

SOWAFLEX®

► the lightweight & sturdy wall cladding

- Protects the vehicle from the inside against damages
- Highly impact and scratch resistant
- Damp and chemical resistant
- Cut-to-size for all vehicle models
- 100% recyclable honeycomb material
- **60% lighter than wood**

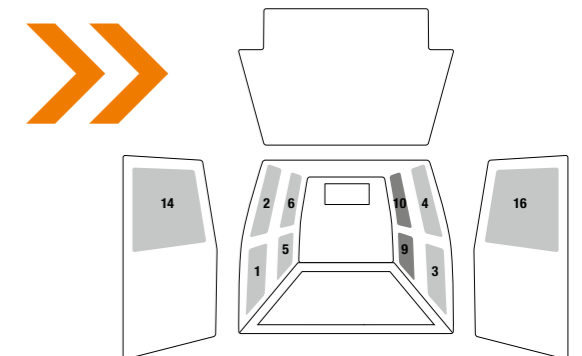
| Vehicle type | Wheelbase | Roof | Version | Article No. |
|----------------------------------|------------|-------|-----------------------|-------------|
| ► Transit L2 | 3300 mm | H2 | Side cladding (1-6) | 1000002687 |
| ► Transit L2 | 3300 mm | H3 | Side cladding (1-6) | 1000002688 |
| ► Transit L2/L3 | 3300 mm | H2/H3 | Wing door top 14/16 | 1000002644 |
| ► Transit L2/L3 | 3300 mm | H2/H3 | Sliding door top 10 | 1000002657 |
| ► Transit L2/L3 | 3300 mm | H2/H3 | Sliding door bottom 9 | 1000002656 |
| ► Transit L3 / Front-/Rear drive | 3750 mm L1 | H2 | Side cladding (1-6) | 1000002654 |
| ► Transit L3 / Front-/Rear drive | 3750 mm L2 | H3 | Side cladding (1-6) | 1000002707 |

SOWAAPP®

► The extremely sturdy wall cladding made out of aluminium

- Protects the vehicle interior and serves at the same time as a clever fastening mechanism for a wide range of accessories such as hooks and perforated wall holders, thanks to its perforated system.
- Quickly installed due to fastening with clips and drilling screws on allocated points in vehicle.
- Moisture and chemical resistant
- Cut perfectly to size for your vehicle type.

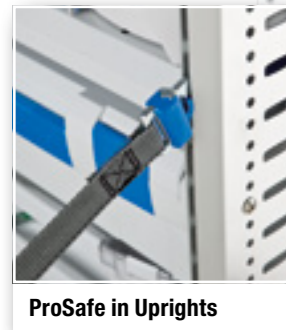
AVAILABLE FROM NOVEMBER 2014



Wall cladding selection

| Vehicle type | Wheelbase | Roof | Version | Article No. |
|-----------------|--------------|-------|-----------------------|-------------|
| ► Transit L2 | 3300 mm | H2 | Side cladding (1-6) | 1000003195 |
| ► Transit L3 | 3750 mm L1 | H2 | Side cladding (1-6) | 1000003197 |
| ► Transit L2/L3 | 3300/3750 mm | H2/H3 | Wing door top (14/16) | 1000003209 |

PROSAFE - SAFETY SERIES PRODUCTION



ProSafe in Uprights



ProSafe in the Traverse



ProSafe lashing point in the Floor



ProSafe as Floor Rails

ProSafe is integrated as a standard in the load safety system from Sortimo.

The lashing belts and load safety nets can be hooked in uprights, frames, traverses and floor rails without difficulty. ProSafe makes load safety possible in no time at all.

Your benefits:

- ✓ You and your freight are safe on the road.
- ✓ You preserve your material.
- ✓ You save on time, weight and money.



ProSafe bungee strap

The ProSafe bungee strap suits perfectly for the fixation of bulky goods in a vehicle.



CargoStopp ProSafe

The CargoStopp allows for reliable load safety on the vehicle safety floor. It is inserted into the ProSafe floor lashing point with its hook.

SOBOGRIP PROSAFE PROTECTIVE FLOOR

SECURE, TIME SAVING AND SIMPLE!

NEW!

The SoboGrip ProSafe protective floor is an innovative and professional load securing concept from Sortimo which enables a completely flexible lashing of goods on the floor. That way, goods can be secured more quickly, more diversely and more efficiently than ever before. In addition the SoboGrip ProSafe floor is compatible with all ProSafe applications, such as for example straps or restraint poles and enables a quick and easy assembly of Sortimo van racking systems by means of preconfigured connection points.

The Sortimo SoboGrip ProSafe protective floor is the modular base load securing concept

- ✓ highest safety standard,
- ✓ variable applicability,
- ✓ optimum efficiency for your workday!



SOBOECO FLOOR - **NEW!**

THE EXTRA LIGHTWEIGHT PROTECTIVE FLOOR

The **SoboEco floor** is an especially lightweight plastic protective flooring with a corrugated surface structure therefore enhancing grip ability.

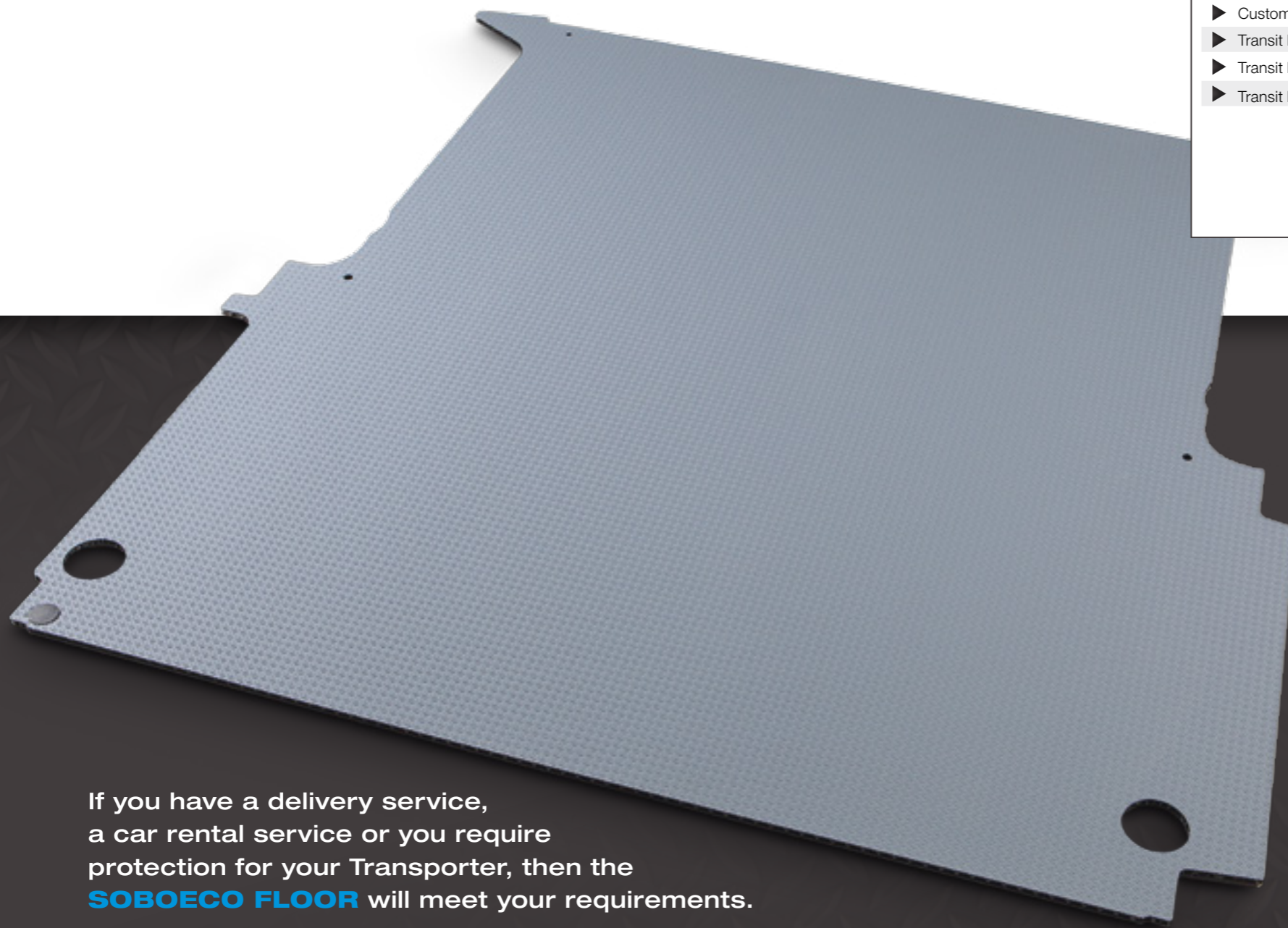
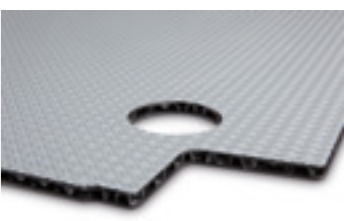
With the SoboEco floor Sortimo offers a solution for everybody that does not require a van racking system but still would like to protect their vehicle against damage and wear and tear.

Quick and simple protection for your vehicle - with the SoboEco floor:

- ✓ extra light, 50% lighter than wood
- ✓ no assembly effort
- ✓ delivered in one piece

THE SOBOECO FLOOR FOR YOUR FORD:

| Vehicle type | Wheelbase | Roof | Article No. |
|--------------|------------|-------|-------------|
| ▶ Connect L1 | 2662 mm | H1 | 1000003060 |
| ▶ Connect L2 | 3062 mm | H1 | 1000003120 |
| ▶ Custom L1 | 2933 mm | H1/H2 | 1000003230 |
| ▶ Custom L2 | 3300 mm | H1/H2 | 1000003149 |
| ▶ Transit L2 | 3300 mm | H2/H3 | 1000003231 |
| ▶ Transit L3 | 3750 mm L1 | H2/H3 | 1000003232 |
| ▶ Transit L4 | 3750 mm L2 | H2/H3 | 1000003233 |



MATERIAL PROPERTIES

- ✓ Floor made of plastic
- ✓ Material strength 10.5 mm
- ✓ Extremely slip-proof due to groove structure
- ✓ Moisture and chemical resistant
- ✓ Cut to fit vehicle type exactly



If you have a delivery service, a car rental service or you require protection for your Transporter, then the **SOBOECO FLOOR** will meet your requirements.

TOPSYSTEM FLEXIBLE LOAD SECURITY ON THE VEHICLE ROOF



Ladder lift

The Sortimo ladder lift is suitable for the convenient transport of heavy ladders. Thanks to the gas-pressure spring supported lifting system there is no lifting or lashing of the ladder required. All single and multi-ladders can be easily accessed from the ground. The ladder lift is available in two basic lengths 2.5 and 3 metres.



The transport tube

A perfect addition to the TopSystem. The transport tube is ideal for securely storing long goods and keeping them dry. The cover is lockable.



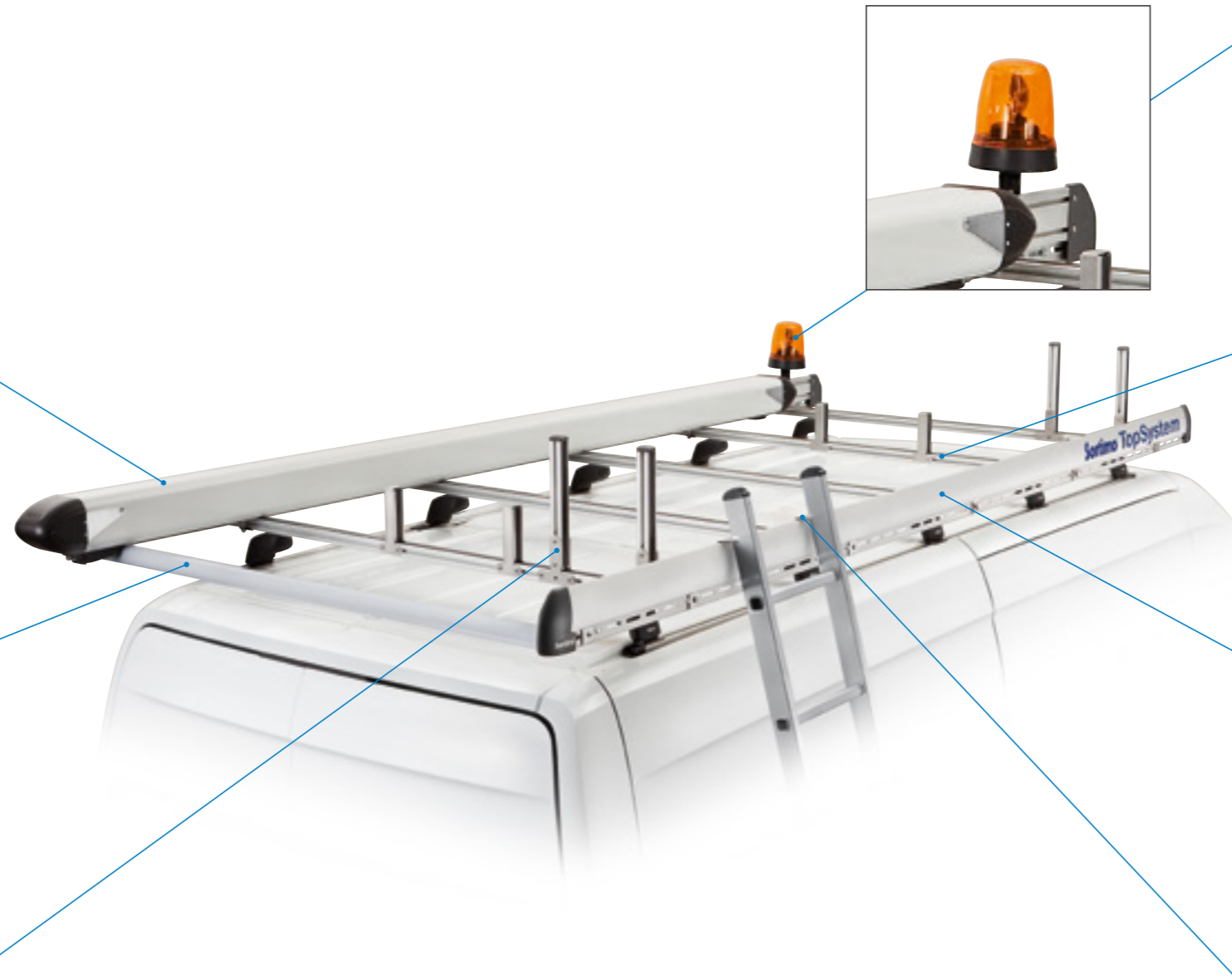
Loading roller

The ideal helper for heavy or large volume goods. Your loading material can be conveniently rolled onto or off the vehicle roof. It is available in the following widths: 500, 1250, 1350, 1450, 1550, 1650 and 1750 mm.



Profile supports which can be variably positioned

The profile supports are responsible for the side wall securing of loads. The height of the profile support can be individually shortened as required. Both profile supports are to be fastened anywhere needed above the aluminium cross members.



Panorama warning beacon

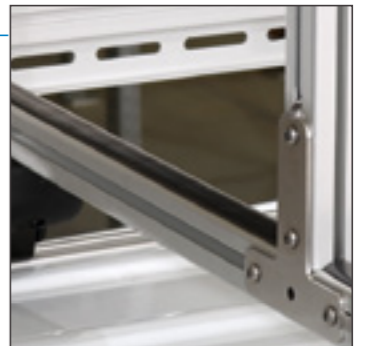
A warning beacon to safeguard a place of operation.

Alternatively the magnetic warning beacon can be attached to the lateral retaining bracket on the TopSystem without the need for any drilling (see picture right).



The profile tracks

Enables easier implementation of additional cross members. It increases stability and carries a vast amount of accessories. The lashing strap buckles can be easily latched to the tracks. The rubber strip on the top prevents the load from slipping.



The side rail

The aluminium side rail increases stability and implements as many cross members as required. Your company logo can be put on to the side rail. A ladder can be leant against the vehicle without damaging it.



Fastening for ladders

To hold the ladder in place and prevent it from slipping sideways, it is possible to mount fixing clamps on the side wall of the vehicle.



Operating platform

Sortimo's finishing touch to a complete product portfolio is the operating platform. The guard rail on the TopSystem secures you even when working at an airy height. The lightweight system is comprised of anodised aluminium and connection elements made from high quality steel and is suitable for all vehicle roofs. The guard rail can be easily folded away after usage.

ORIGINAL ACCESSORIES FROM SORTIMO

With the help of **Sortimo's industry-specific Original Accessories** our Xpress racks can be customised to your individual needs. The convenient perforated aluminium plate for example offers the ideal place to attach hooks and holders for tools and documents.

Moreover, customised partitions and divider sets for drawers or trays, storage pockets, lashing rails, workbenches and much more facilitate the best usage of your vehicle.



<http://www.sortimo.com/brochures>

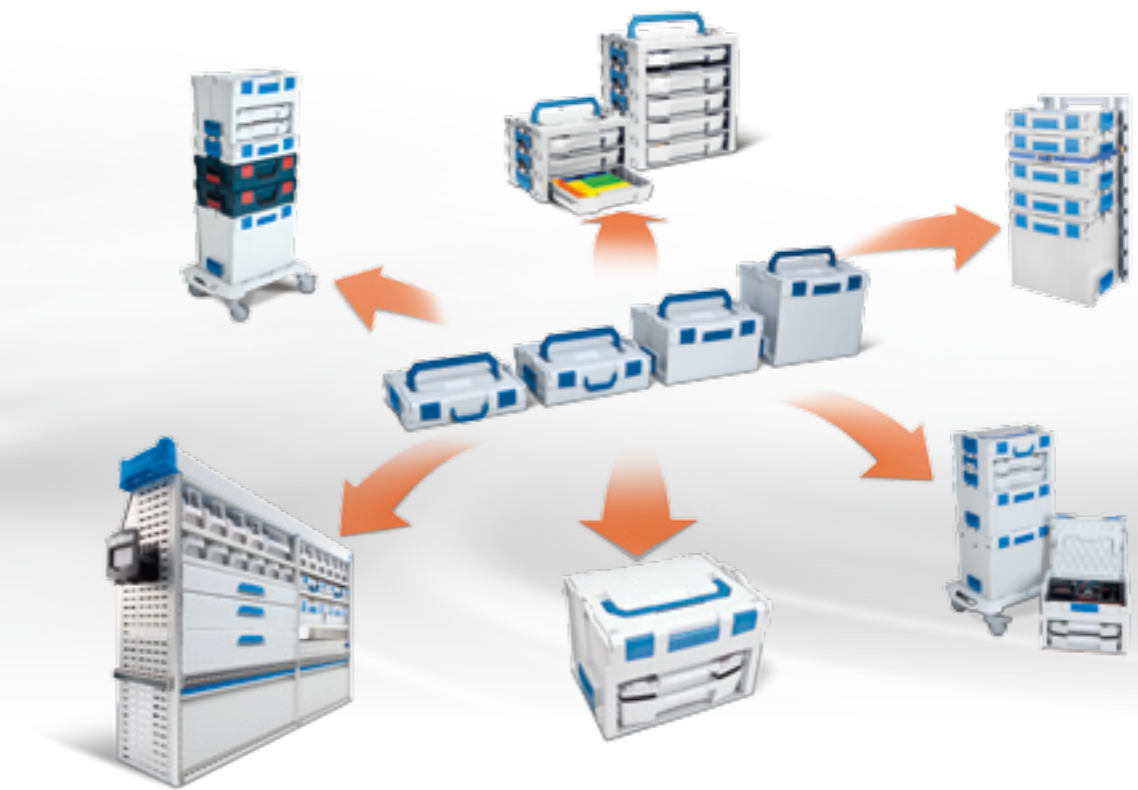
Discover more in our brochures Original Accessories and Mobile Assortments:

Download on: www.sortimo.com/brochures.
or order via the form on **page 41**.

MOBILE ASSORTMENTS PORTABLE ORDER FROM THE START

Sortimo offers a great variety of **Mobile Assortments in terms of cases and BOXXes**, which can be

combined with one another and are compatible with the van racking solutions.



PARTNER APPS

Not only Sortimo customers are convinced of our BOXXes, but renowned manufacturers as well. They use the **Sortimo L-BOXX** as a transportation box and outer packaging. Thanks to continuous new partners the L-BOXXes become true partner apps with a variety of application options. Regardless from which manufacturer you acquire a Sortimo BOXX, the system stays the same and **is of course compatible with the Sortimo van racking solutions**.

Your benefits:

- ✓ You can easily take the BOXXes with you to the site of operation.
- ✓ You keep order in your vehicle and at your workplace.
- ✓ Your tools, machines, small and spare parts are securely stored in the vehicle.



WHY COMPLICATED, IF YOU CAN ALSO HAVE IT SIMPLECO®?

You are looking for a simple and efficient order solution for your van?

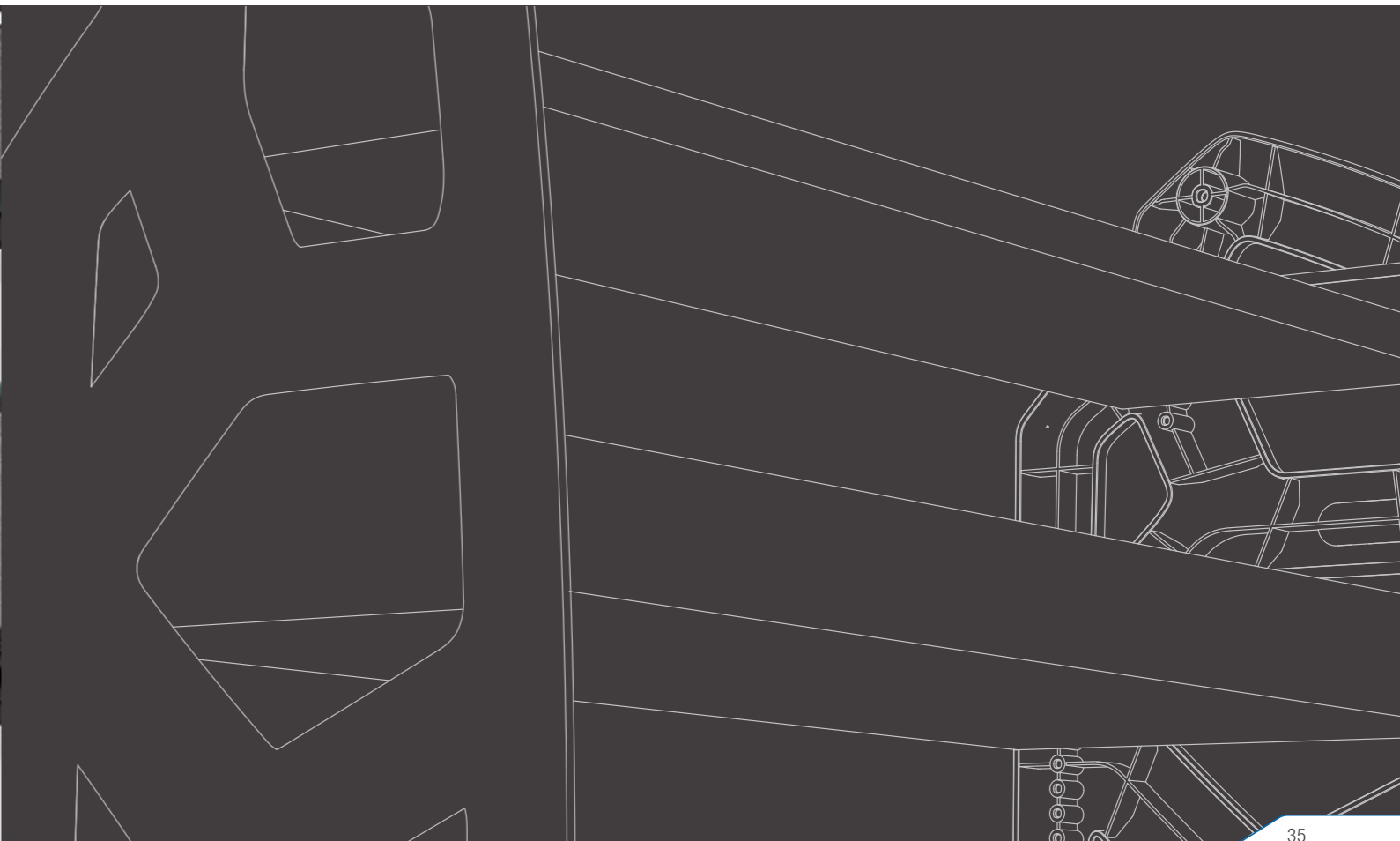
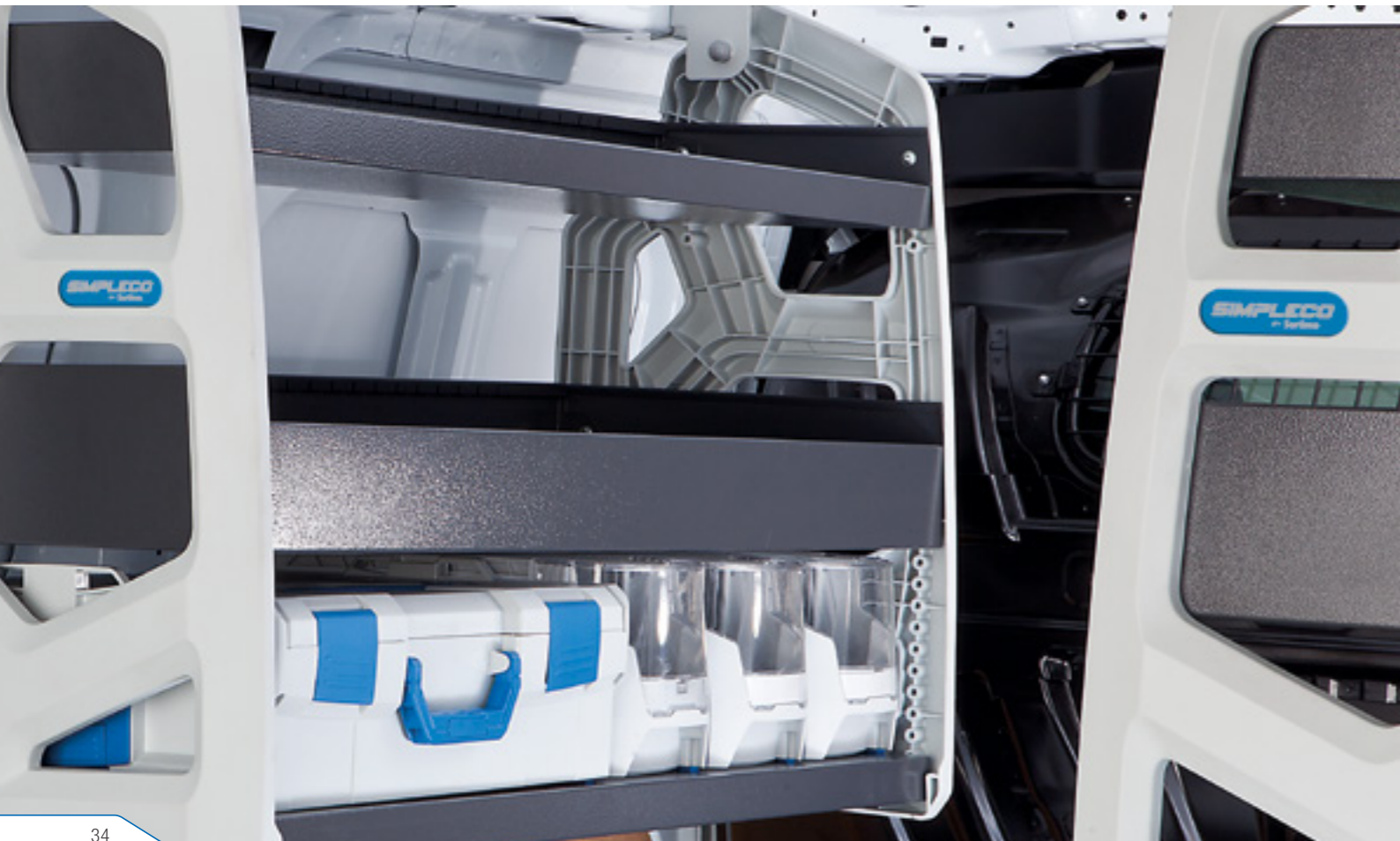
The simpleco shelf system convinces with simple self-assembly and shortest delivery times within three working days.

With just a few movements you have a shelf system with low net weight and sufficient storage space into which you can of course conveniently integrate all Sortimo BOXXes.

Since the simpleco system works **without floor plate**, you not only save installation time, but in particular weight and costs. At the same time there is enough space for bulky loads.



SIMPLECO BY Sortimo®
simple & economic



SIMPLECO®

SIMPLE AND ECONOMIC



Innovative shelving design in proven Sortimo quality

With simpleco, you can kit out your vehicle with smart equipment at a great price, without having to compromise on quality.



Delivery within 3 working days throughout Europe.

Your new simpleco equipment will be delivered to you by courier within just 3 working days.



Fits all popular makes of compact van

We have a suitable simpleco solution in stock for all common brands of vans.



No need to be without your vehicle for a minute.

DIY installation means that you can decide when and where to install the equipment. Detailed instructions for easy assembly are provided with each delivery.



Lightweight and easy on the pocket

simpleco gives you top performance at a low price. Its lightweight construction keeps down your fuel costs and your van still retains the same carrying capacity.



You will be delighted with simpleco® – guaranteed!

We are so convinced of the top quality of our simpleco equipment that it comes with a 3 year guarantee from Sortimo.



Choose your own individual simpleco® fittings!

With 12 different shelf options in three widths and two depths for both the left and right side, you can kit out your vehicle exactly how you want it.



No-risk purchase

If you are not totally satisfied with your simpleco system, just return it to us within one month of purchase for a full refund.*

* Our General Terms and Conditions apply. See: www.sortimo.com

FORD TRANSIT CONNECT

Wheelbase 2662 mm, Model year 2014, sliding door right side



MOUNTING KIT SELECT:
(identical for right and left sides)

MOUNTING KIT NOT REQUIRED



BLOCK CONNECTOR SELECT:

LEFT BLOCK CONNECTOR
is essential!
SPC M0 FOCO 14 L40
Ref. no. 1000002921

RIGHT BLOCK CONNECTOR
is essential!
SPC M0 FOCO 14 R20
Ref. no. 1000002918



SELECT THE CORRECT BLOCK:

LEFT
(DRIVER SIDE)

RIGHT
(PASSENGER SIDE)



SPC 43 FR-FW-FR
Ref. no. 901016944
Dim.: 1094 x 275 x 657 mm
1 Shelf base 42 with rim
1 Shelf base 43 with rim
1 Shelf tray 43
Weight: 14 kg
Resilience: 45 kg



SPC 23 FR-FW-FR
Ref. no. 901016942
Dim.: 638 x 275 x 657 mm
1 Shelf base 22 with rim
1 Shelf base 23 with rim
1 Shelf tray 23
Weight: 10 kg
Resilience: 45 kg



SPC 43 BB-FW-FR
Ref. no. 901016941
Dim.: 1094 x 275 x 657 mm
1 Shelf base 42 with rim
1 Shelf tray 43
1 Box tray with 6 S-BOXXes
Weight: 14 kg
Resilience: 45 kg



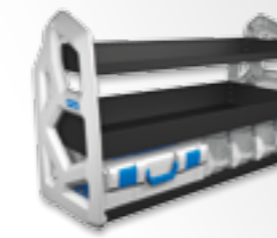
SPC 23 BB-FW-FR
Ref. no. 901016939
Dim.: 638 x 275 x 657 mm
1 Shelf base 22 with rim
1 Shelf tray 23
1 Box tray with 3 S-BOXXes
Weight: 10 kg
Resilience: 45 kg



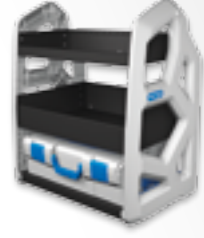
SPC 44 FR-FW-FR
Ref. no. 901016938
Dim.: 1094 x 379 x 657 mm
1 Shelf base 43 with rim
1 Shelf base 44 with rim
1 Shelf tray 44
Weight: 15 kg
Resilience: 60 kg



SPC 24 FR-FW-FR
Ref. no. 901016936
Dim.: 638 x 379 x 657 mm
1 Shelf base 23 with rim
1 Shelf base 24 with rim
1 Shelf tray 24
Weight: 11 kg
Resilience: 60 kg



SPC 44 BB-FW-FR
Ref. no. 901016935
Dim.: 1094 x 379 x 657 mm
1 Shelf base 43 with rim
1 Shelf tray 44
1 Box tray with 1 L-BOXX 136
and 3 S-BOXXes
Weight: 16 kg
Resilience: 60 kg



SPC 24 BB-FW-FR
Ref. no. 901016933
Dim.: 638 x 379 x 657 mm
1 Shelf base 23 with rim
1 Shelf tray 24
1 Box tray with 1 L-BOXX 136
Weight: 12 kg
Resilience: 60 kg

SEE ORDER FORM ON THE SECOND LAST PAGE OF THE BROCHURE

SIMPLECO® ACCESSORIES



simpleco
Anti-rattle mat 32-0
Dimensions: 626 x 145 mm
suitable for shelf and shelf tray 32
Art. No. 6000001651

simpleco
Anti-rattle mat 33-0
Dimensions: 634 x 242 mm
suitable for shelf and shelf tray 33
Art. No. 6000001654

simpleco
Anti-rattle mat 34-0
Dimensions: 642 x 346 mm
suitable for shelf and shelf tray 34
Art. No. 6000001656

Label set for S-BOXX standard

Art. No. 6000000451
1 sheet with 18 labels



Divider shelf base with rim depth 3
TB FR 03-0
Ref. no. 401010278
Suitable for shelf base with rim 23, 33 and 43



Divider shelf base with rim depth 4
TB FR 04-0
Ref. no. 401010279
Suitable for shelf base with rim 24, 34 and 44

For every divider a divider bracket is needed.

Divider bracket for shelf base with rim
SPC TBH FW
Ref. no. 401002971



Divider for shelf tray depth 3
TB FW 3
Ref. no. 401002730
Suitable for shelf tray 23, 33 and 43



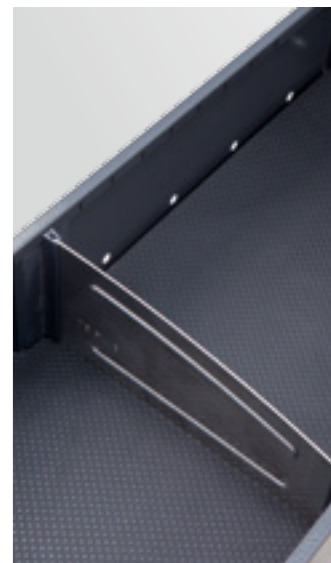
Divider for shelf tray depth 4
TB FW 4
Ref. no. 401002731
Suitable for shelf tray 24, 34 and 44

For each, a front and rear divider bracket is needed.

Divider bracket shelf tray front
SPC TBH FW
Ref. no. 401002971



Divider bracket shelf tray rear
SPC TBH FW
Ref. no. 401002973



SEE ORDER FORM ON THE SECOND LAST PAGE OF THE BROCHURE

SORTIMO IN GERMANY

BRANCH OFFICES AND PARTNERS

SORTIMO INTERNATIONAL GmbH **HEADQUARTERS**

Dreilindenstraße 5
86441 Zusmarshausen
Tel. +49 8291 850-0
Fax +49 8291 850-250
Email: info@sortimo.com
www.sortimo.com

Sortimo branch office Berlin

Gartenfelderstraße 15
13599 Berlin
Tel. 030 2005370-0
Fax 030 2005370-19
Email: berlin@sortimo.de

Sortimo branch office Dresden

Hamburger Straße 14
01067 Dresden
Tel. 0351 207362-0
Fax 0351 207362-29
Email: dresden@sortimo.de

Helgo Duckstein

Julius-Brumme-Straße 2a
06406 Bernburg
Tel. 03471 640011
Fax 03471 640066
Mobil 0171 3165813

Lutz Stelzner

04178 Leipzig
Can be contacted via
Dresden office

Jörg Schäfer

02906 Niesky
Can be contacted via
Dresden office

Sortimo branch office Düsseldorf

Bonner Straße 205
40589 Düsseldorf
Tel. 0211 889206-0
Fax 0211 889206-11
Email: duesseldorf@sortimo.de

Sortimo branch office Frankfurt/Main

Waldstraße 74
63128 Dietzenbach
Tel. 06074 91456-0
Fax 06074 91456-22
Email: frankfurt@sortimo.de

Günter Hund

66119 Saarbrücken
Can be contacted via
Frankfurt/Main office

Sortimo branch office Hamburg

Ausschläger Allee 178
20539 Hamburg
Tel. 040 571954-0
Fax 040 571954-54
Email: hamburg@sortimo.de

Manfred Meyer

Am Ems-Vechte-Kanal 32
48531 Nordhorn
Tel. 05921 3042325
Fax 05921 3045263
Mobil 0160 4759281

Sortimo branch office Munich

Landshuter Straße 13
85716 Unterschleißheim
Tel. 089 37004560
Fax 089 37004589
Email: muenchen@sortimo.de

Manfred Rieder

84028 Landshut
Can be contacted via
München office

Christian Schmaus

83278 Traunstein
Can be contacted via
München office

Sortimo branch office Nürnberg

Benno-Strauß-Straße 37
90763 Fürth
Tel. 0911 48035-35
Fax 0911 48035-36
Email: nuernberg@sortimo.de

Sortimo branch office Stuttgart

Nürtinger Straße 50
73257 Köngen
Tel. 07024 9726-0
Fax 07024 9726-10
Email: stuttgart@sortimo.de

Michael Burkhardt

88699 Frickingen
Can be contacted via
Stuttgart office

Sortimo branch office Zusmarshausen

Dreilindenstraße 5
86441 Zusmarshausen
Tel. 08291 850-149
Fax 08291 850-253
Email: zusmarshausen@sortimo.de



Sortimo partner Bad Dübén

Rolf Frömmichen
Hauptstraße 10
04849 Authausen
Tel. 034243 26234
Fax 034243 22114
Email: sortimo-froemmichen@gmx.de

Sortimo partner Berlin

IFP GmbH
Buckower Chaussee 85
12277 Berlin
Tel. 030 72016005
Fax 030 89726753
Email: ifp-berlin@t-online.de

Peter Herrmann

14542 Werder (Havel)
Can be contacted via
Sortimo partner Berlin

Sortimo partner Bremen, Braunschweig, Celle

Wilfried Klatt GmbH
Burger Landstraße 1 a
29229 Celle
Im Finigen 15
28832 Achim
Tel. 04202 521730
Fax 04202 521732
Email: info@klatt-sortimo.de

Jürgen Nemeč

28195 Bremen
27283 Verden
49356 Diepholz
29614 Soltau
Can be contacted via
Sortimo partner Bremen

Thorsten Iseke

38100 Braunschweig
38440 Wolfsburg
38350 Helmstedt
Can be contacted via
Sortimo partner Bremen

Benjamin Klatt

29227 Celle
21335 Lüneburg
29525 Uelzen
29451 Dannenberg
Can be contacted via
Sortimo partner Bremen

Sortimo partner Brüggen

Bartsch + Feikes GmbH
Weihersfeld 18
41379 Brüggen
Tel. 02163 9997-0
Fax 02163 9997-77
Email: info@bartsch-feikes.de

Sortimo partner Erfurt

Firma Gregor
Inh. Mario Gregor
Kalkreife 14
99085 Erfurt
Tel. 0361 550440-0
Fax 0361 550440-10
Email: info@gregor-erfurt.de

Sortimo partner Essen

Heiko Dworak GmbH & Co.
Verwaltungs KG
Johanniskirchstraße 98
45329 Essen
Tel. 0201 747008-1
Fax 0201 747008-3
Email: hdworak@sortimo-essen.de

Sortimo partner Fulda

Josef Leibold GmbH
Philipp-Reis-Straße 19-21
36093 Künzell
Tel. 0661 31019
Fax 0661 36697
Email: hojo@leibold-karosseriebau.de

Sortimo partner Gera

PFK Eickmeier GmbH & Co. KG
Wiesenring 8
07554 Korbußen
Tel. 036602 241-0
Fax 036602 241-23
Email: pfk-eickmeier@t-online.de

Sortimo partner Gerstetten

Klaus Fries
Amselweg 5
89547 Gerstetten
Tel. 07323 3907
Fax 07323 921867
Email: sortimo-station-gerstetten@t-online.de

Sortimo partner Halle

Gruber Fahrzeugbau GmbH
Geltestr. 3
06184 Kabelsketal OT Dölbau
Tel. 034602 4364-0
Fax 034602 4364-13
Email: info@gruber-sortimo.de

Sortimo partner Hannover

HIG GmbH
Molkereistraße 33
30826 Garbsen
Tel. 05131 4829 930
Fax 05131 48299359
Email: vertrieb@hig-hannover.de

Gernot Jünke

31785 Hameln
37154 Northeim
38640 Goslar
Can be contacted via
Sortimo partner Hannover

Joachim Lieke

30000 Hannover
31100 Hildesheim
Can be contacted via
Sortimo partner Hannover

Christian Horstmann

31582 Nienburg
Can be contacted via
Sortimo partner Station Hannover

Sortimo partner Heilbronn

Klaus & Hartmut Stöckel GbR
Sägmühlstraße 45
74930 Ittlingen
Tel. 07266 911555
Fax 07266 911557
Mobil 0173 3257383
Email: stoeckel.fahrzeugbau@t-online.de

Sortimo partner Kassel-Göttingen

Peter Welsch Handelsvertretung GmbH
Ellenbacher Straße 6
34123 Kassel
Tel. 0561 524300
Fax 0561 5296810
Email: info@sortimo-kassel.de

Sortimo partner Koblenz

L & S GmbH & Co. KG
Hinter der Jungenstraße 9
56218 Mülheim-Kärlich
Tel. 0261 98888310
Fax 0261 988883120
Email: info@ls-fahrzeugeinrichtungen.de

Sortimo partner Magdeburg

Lohanser GmbH
Geschwister-Scholl-Straße 147
39218 Schönebeck (Elbe)
Tel. 03928 4102-76
Fax 03928 4102-77
Email: info@lohanser.de

Sortimo partner Mainz

soflex GmbH
An der Krimm 25
55124 Mainz
Tel. 06131 1444266
Fax 06131 1444445
Email: sortimo.schwerin@t-online.de

Sortimo partner Mannheim

soflex GmbH
Schildkrötstraße 29
68199 Mannheim
Tel. 0621 84254-0
Fax 0621 84254-29
Email: contact@soflex-ma.de

Jürgen Herrmann

64289 Darmstadt
Can be contacted via
Sortimo partner Mannheim

Sortimo partner Kaiserslautern

soflex GmbH
Kaiserstrasse 74
67661 Kaiserslautern
Tel. 0631 3507545
Fax 0631 3507776
Email: lang@soflex-ma.de

Sortimo partner Marl

Gahlen Fahrzeugeinrichtungen
und Anhänger Vertriebs GmbH
Boschstraße 6
45770 Marl
Tel. 02365 81911
Fax 02365 508161
Email: gahlen-sortimo@t-online.de

Sortimo partner Ostwestfalen-Lippe

THL GmbH
Stadttheider Straße 1-3
33609 Bielefeld
Tel. 0521 30443-0
Fax 0521 30443-22
Email: info@thl-bielefeld.de

Sortimo partner Pforzheim

Sortimo Station Pforzheim
HS Fahrzeug- und
Betriebs-einrichtungen GmbH
Hoheneichstraße 48
75217 Birkenfeld
Tel. 07231 80019-0
Fax 07231 80019-19
Email: info@sspf.de

Denis Bugert

76532 Baden-Baden
76131 Karlsruhe
75365 Calw
71083 Herrenberg
72250 Freudenstadt
Can be contacted via
Sortimo partner Pforzheim

Sortimo partner Schweinfurt

Karl-Heinz Maar
Kreuzstraße 2
97532 Uchtelhausen
Tel. 09720 1882
Fax 09720 3923
Email: karl-heinz.maar@t-online.de

Sortimo partner Schwerin

HGS Fahrzeug- u.
Betriebs-einrichtungen GmbH
Lindenweg 1
19075 Pampow/Schwerin
Tel. 03865 829-0
Fax 03865 82922
Email: sortimo.schwerin@t-online.de

Marko Morawietz

17489 Greifswald
Can be contacted via
Sortimo partner Schwerin

Falko Maier

18059 Rostock
Can be contacted via
Sortimo partner Schwerin

Sven Lück

17033 Neubrandenburg
Can be contacted via
Sortimo partner Schwerin

Sortimo partner Solingen

Manfred Becker
Kyllmannweg 29
42699 Solingen
Tel. 0212 320001
Fax 0212 320003
Email: info@sortimo-solingen.de

Sortimo partner Teningen

SiTraFa GmbH & Co. KG
Siemensstraße 16
79331 Teningen-Nimburg
Tel. 07663 913080
Fax 07663 913089
Email: bzoller@sitrafa.de

Sortimo partner Weser-Ems

C.A. Brill GmbH
Stadttheider Straße 7
48527 Nordhorn
Tel. 05921 7800-341
Fax 05921 7800-10
Email: m.jansen@ca-brill.de

Sortimo partner Wetzlar

Auto-Schach GmbH & Co. KG
Industriestraße 15-17
35582 Wetzlar-Dutenhofen
Tel. 0641 97901-0
Fax 0641 97901-10
Email: info@auto-schach.de

INFO-CHECK

Simply fill out the form and fax it to Sortimo +49 8291 850-269

Please send me further information and brochures free of charge and without obligation:

- Mobile Assortment Brochure
- Sortimo Original Accessories Brochure
- I would like to have a consultation to find out more about Sortimo van racking solutions. Please call me back to arrange an appointment with no obligation.

My telephone number is: _____

- I would like to subscribe to the Sortimo Newsletter free of charge.

My e-mail address is: _____



Company name

Surname, first name

Street

Postcode City

Tel.

Fax

e-mail

Line of business

Date

Signature (company stamp)

WE ARE ALWAYS THERE FOR YOU!
YOUR CONTACT TO SORTIMO

Call us in Germany:

Tel. +49 8291 850-499

Fax +49 8291 850-269

E-Mail: direct@sortimo.com

www.sortimo.com/direct



Thank you for your interest and we look forward to hearing from you!



Sortimo International GmbH
Dreilindenstraße 5 · 86441 Zusmarshausen · Germany
Tel. +49 8291 850-499 · Fax +49 8291 850-269 · www.sortimo.com



For more information
WWW.SORTIMO.COM

Sortimo[®]
Intelligent Mobility

Sortimo International GmbH
Dreilindenstraße 5 · 86441 Zusmarshausen · GERMANY
Phone: +49 8291 850-499 · Fax: +49 8291 850-269
E-mail: info@sortimo.com · www.sortimo.com