

xpress

Sortimo[®]
Intelligent Mobility



PEUGEOT OUTSIDE – SORTIMO INSIDE

Made for professionals



PEUGEOT
PROFESSIONAL



ICONS + FEATURES

Xpress

Time is money – Fast delivery and installation are guaranteed.



3 years warranty – Sortimo offers a 3 year guarantee on these products.



Upgrade – This very flexible product can be individually combined with other Sortimo products.



Crash tested – This product fulfills the high safety requirements of Sortimo. In co-ordination with the German TÜV, DEKRA and the ADAC, the equipment has been successfully crash-tested in simulated emergencies.



Lightweight yet robust – This product combines modern lightweight construction with utmost stability.



ProSafe – The lashing point for the ProSafe hooks are already integrated in the equipment and quickly ready for use.



CO₂ reduction – Based on modern lightweight construction, the weight of the equipment has been considerably reduced to save on petrol and reduce CO₂ emissions.

PEUGEOT AND SORTIMO – COMPREHENSIVELY CARE-FREE

Buying a vehicle is a matter of trust

You have chosen a Peugeot CV because you set value on quality and individual benefits. But quality and individual benefit should not know any boundaries.

This is why Sortimo is exactly the right choice if you wish to have a van racking solution. We open up new horizons with intelligent solutions for your individual requirements.

Your benefits

We have perfectly fitted equipment for your transporter, because we develop our solutions together with Peugeot. The Sortimo shelves are tailored to exactly match the already existing fastening points in your vehicle.

Therefore you no longer have to put up with any damage to the body of your transporter.

Individually for you, perfect fit for your Peugeot.

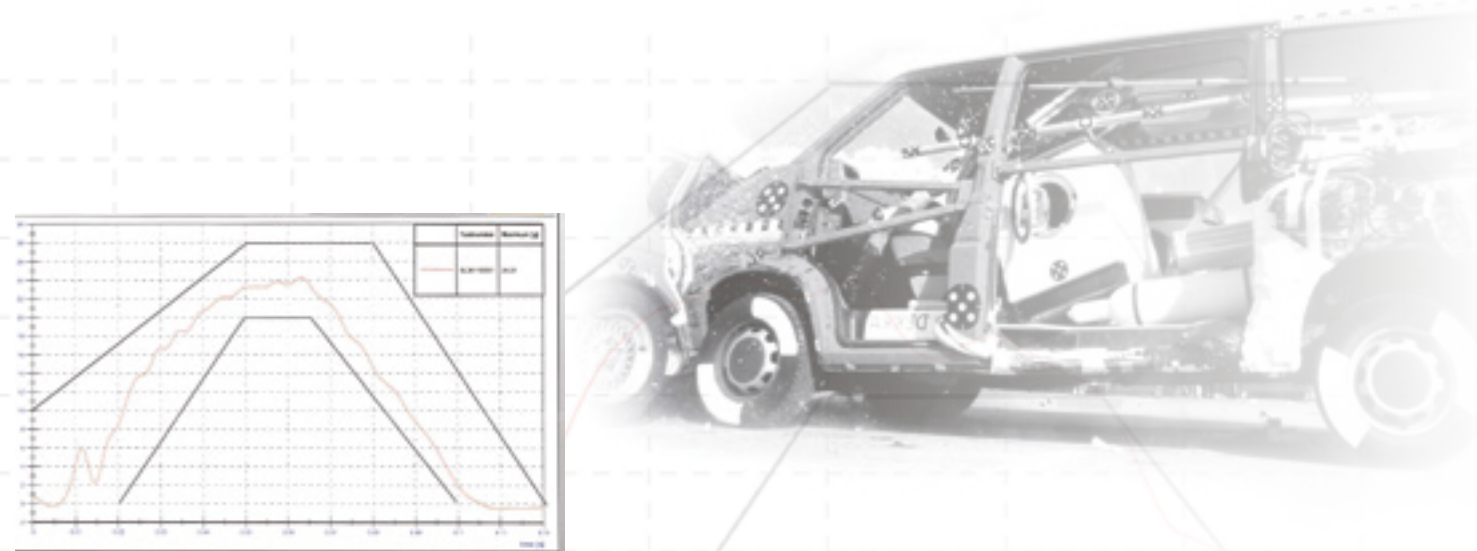
CRASH TEST

We've driven our products into the wall - successfully

All Sortimo van racking solutions have been crash tested. In co-operation with the German TÜV, Dekra and ADAC, Sortimo simulates the emergency under real conditions, so that your load won't become a life-threatening projectile in case of a crash.

At a barrier impact speed of 50 km/h, the Sortimo products are literally driven into the wall. This way we ensure that our van racking solutions also meet the high demands of Sortimo when it comes to safety.

Only those which pass their on-road test are good enough for our customers.



OUR PACKAGE FOR YOU

We open up new horizons for your requirements and your Peugeot with convenient van racking solutions.



GLOBELYST XPRESS from page 6

Globelyst scores with its modular system, which can be changed or extended as you wish, at any time. **Xpress** describes van racking solutions of the Globelyst product line, which **perfectly fit to your Peugeot Bipper, Partner, Expert or Boxer** and are delivered and installed in Xpress time.



PROSAFE

With the **ProSafe lashing system** both you and your transport are safe on the road. The integrated load securing system ProSafe from Sortimo enables a **quick and easy lashing of loads** and thereby provides not only for safety but also for order and an efficient operational management.

Since 2014 Sortimo offers in addition as sole manufacturer an entire load securing package as a complete solution for your Transporter with its **SoboGrip ProSafe floor**.

Further information can be found on **page 26**.

SIMPLECO from page 34

The clever solution for your Bipper and Partner for **self-assembly**. The shelves are suspended from above so that there is still sufficient space for pallets and bulky loads in the floor area, even in a versatile small van.

Your advantage: The order is made **quick and easy** and is delivered to you within a short time. Take a look at simpleco for yourself from **page 34** onwards.



from page 26

THE PACKAGE:

Predefined van racking solution with maximum use of space

- + attractive price-performance ratio
- + everything from a single source

With the **Sortimo load safety system, the BOXes and the case programme**, as well as with the extensive **Original Accessories** your individuality does not have set boundaries.

You can find further information on this from **page 26 to 33**.

from page 26-33



GLOBELYST - AT A GLANCE

Xpress

Composite long components tray

The long components tray allows you to transport longer items in the vehicle without any problem.

Sortimo S-BOXX

Sortimo's S-BOXXes are available in four heights, two widths and three depths. They are the ideal container for small components, spare parts or screws and can be securely locked on the shelf. You can pull the drawer out for easy access to all parts.

Sortimo i-BOXX

The i-BOXXes from Sortimo are clever little storage solutions that can be used on their own or as part of the LS-BOXX. They are available in two heights and can be fitted with Inset boxes.

Sortimo Accessories

Original accessories from Sortimo are practical supplementary products for all trades and industries. From the cable holder to the cable hook – Sortimo will fulfil your requirements.

Racks and trays

Up to the last corner, the space in your vehicle can be utilised: Tools and spare parts can be neatly arranged in the racks and trays of Globelyst.

Floor Front

Floor fronts provide for order, visual cover and safety in the vehicle.

i-BOXX Adaptor plate

Your i-BOXX is securely locked in place during transport with the aid of the i-BOXX holder. The holder can be screwed to the perforated side panel or to the vehicle itself.

Shutter

With the shutter made out of hollow-chamber profiles, load safety and visual cover takes only one movement. The optional lock provides additional protection against unauthorized access.

ProSafe

The load safety system is integrated into the poles and traverses of the van racking solution.

Sortimo L-BOXX and LS-BOXX

Mobile plastic boxes with a wide variety of possible partitions, available in five heights. L-BOXXes can be quickly click-joined with each other and transported as one.

Sortimo T-BOXX

Thanks to the practical plastic case with the transparent lid you can see right away what is in the BOXX. The T-BOXX can be safely stored in the vehicle equipment.

Sortimo M-BOXX

A large mobile box with handle, also available with a lid. The M-BOXX locks in the system and can also be used as a drawer.

Metal case

The original case is available in many different variants. The case is on rails and can be pulled out completely.

Drawers

The new drawers with their user-friendly handles made from impact-resistant plastic are fully extendible and can be loaded with up to 80 kg. They are available in four different widths and heights.

Workbenches

Sortimo workbenches turn your van into a mobile workshop. Both, folding and extendible workbenches are available and can be supplemented with a rotating vice plate and a vice.

Case clamp

Secures tool and machine cases and can be positioned in no time.

MultiSlide

The MultiSlide allows an easy handling of all cases and BOXXes. With the full-extension slide the lids can be opened completely and small parts and tools can be accessed quickly.

Safety and protective floors

The basis for your van racking system is the safety or protective floor. You can choose between a variety of floors. The floors are cut to size for different vehicle models, offer integrated lashing possibilities and protect the vehicle floor from damage.

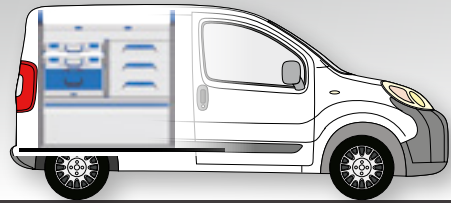
PEUGEOT BIPPER BLOCKS

WHEELBASE: 2513 mm | MODEL YEAR 2008 | SLIDING DOOR RIGHT SIDE

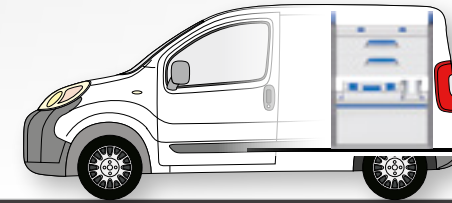


1

Step 1: Select the suitable equipment.



LEFT SIDE
(DRIVERS SIDE)



RIGHT SIDE
(PASSENGERS SIDE)



BI LI-1

- ▶ 2 shelf trays
- ▶ 1 open shelf with border
- ▶ 1 base plinth

▶ WxDxH: approx. 1004 x 382 x 1036 mm
Weight: approx. 23 kg



BI LI-2

- ▶ 1 shelf tray
- ▶ 1 open shelf with border
- ▶ 1 open shelf with 6 half-height S-BOXXes
- ▶ 1 open shelf with 2 M-BOXXes with handle
- ▶ 1 floor drop front

▶ WxDxH: approx. 1004 x 382 x 1036 mm
Weight: approx. 33 kg



BI LI-3

- ▶ Spaceframe with integrated ProSafe lashing system
- ▶ 1 shelf tray
- ▶ 2 T-BOXXes on case rails
- ▶ 1 metal case on case tray
- ▶ 3 drawers
- ▶ 1 lifting flap
- ▶ 1 floor lashing rail ProSafe

▶ WxDxH: approx. 1004 x 382 x 1019 mm
Weight: approx. 47 kg



BI RE-1

- ▶ 1 shelf tray
- ▶ 2 open shelves with borders
- ▶ 1 base plinth

▶ WxDxH: approx. 762 x 270 x 1019 mm
Weight: approx. 15 kg



BI RE-2

- ▶ 1 shelf tray
- ▶ 1 open shelf with border
- ▶ 1 open shelf with 2 S-BOXXes and 1 wide S-BOXX
- ▶ 1 floor drop front

▶ WxDxH: approx. 762 x 270 x 1019 mm
Weight: approx. 15 kg



BI RE-3

- ▶ Spaceframe with integrated ProSafe lashing system
- ▶ 1 shelf tray
- ▶ 2 open shelves with 2 S-BOXXes in each and 1 wide S-BOXX
- ▶ 1 lifting flap
- ▶ 1 floor lashing rail ProSafe

▶ WxDxH: approx. 762 x 270 x 1019 mm
Weight: approx. 20 kg



PEUGEOT BIPPER FLOOR-WALL

WHEELBASE: 2513 mm | MODEL YEAR 2008 | SLIDING DOOR RIGHT SIDE

2

Step 2: Select the appropriate floor.



SOBOGRIP®-PROTECTIVE FLOOR

► the protective floor for tough conditions

Vehicle type	Wheelbase	Article No.
► Bipper	2513 mm	331012740

- Floor made of waterproof glued Nordic birch
- 9 mm protective floor
- Highly scratch and impact resistant
- Custom-fit to your vehicle
- No drilling of the vehicle floor necessary

SOBOGRIP® PROSAFE FLOOR

► the entire load securing package

Vehicle type	Wheelbase	Article No.
► Bipper	2513 mm	1000003131

- All benefits of the SoboGrip protective assembly floor
- + multitude of countersunk lashing possibilities

3

Step 3: Select the appropriate side cladding.

PLEASE COMPLETE THE ORDER FORM AND FAX IT TO SORTIMO

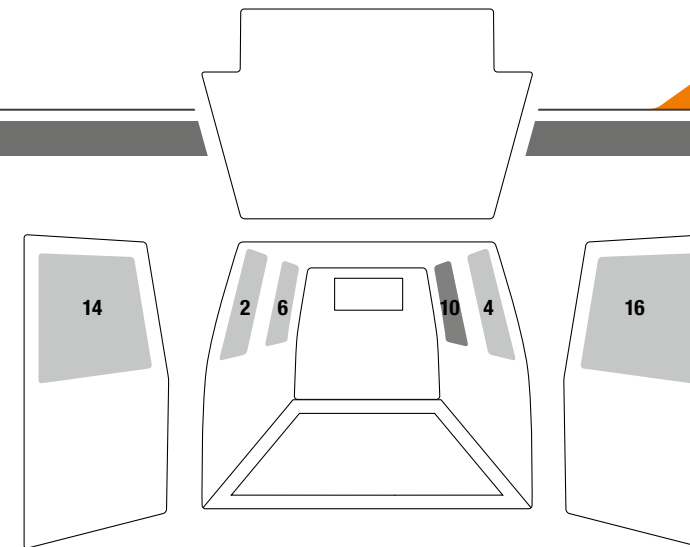
(see second last page)

SOWAFLEX®

► the lightweight & sturdy wall cladding

- Protects the vehicle from the inside against damages
- Highly impact and scratch resistant
- Damp and chemical resistant
- Cut-to-size for all vehicle models
- 100% recyclable honeycomb material
- 60% lighter than wood

Vehicle type	Wheelbase	Roof	Wall cladding	Article No.
► Bipper	2513 mm	H1	Side cladding 2/4/6	331012741
► Bipper	2513 mm	H1	Sliding door top 10	331012743
► Bipper	2513 mm	H1	Wing door top 14/16	331012742



Wall cladding selection

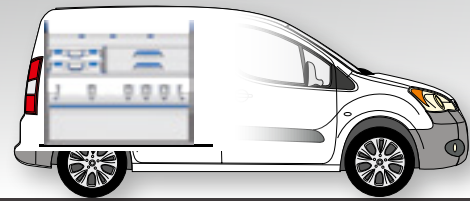
PEUGEOT PARTNER BLOCKS

WHEELBASE: 2728 mm | MODEL YEAR 2008 | SLIDING DOOR RIGHT SIDE

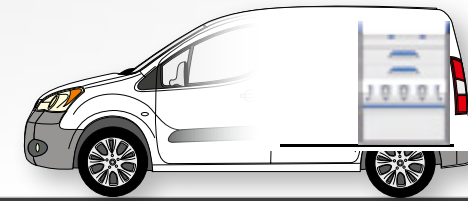


1

Step 1: Select the suitable equipment.



LEFT SIDE
(DRIVERS SIDE)



RIGHT SIDE
(PASSENGERS SIDE)



PA LI-1

- ▶ 2 shelf trays
- ▶ 1 open shelf with border
- ▶ 1 base plinth

▶ WxDxH: approx. 1246 x 382 x 1036 mm
Weight: approx. 26 kg



PA LI-2

- ▶ 1 shelf tray
- ▶ 1 open shelf with 3 S-BOXEs and 2 wide S-BOXEs
- ▶ 1 open shelf with drop-down front
- ▶ 1 floor drop front

▶ WxDxH: approx. 1246 x 382 x 1036 mm
Weight: approx. 29 kg



PA LI-3

- ▶ Spaceframe with integrated ProSafe lashing system
- ▶ 1 shelf tray
- ▶ 2 T-BOXEs on case rails
- ▶ 2 drawers
- ▶ 1 open shelf with 3 S-BOXEs and 2 wide S-BOXEs
- ▶ 1 lifting flap
- ▶ 1 floor lashing rail ProSafe

▶ WxDxH: approx. 1246 x 382 x 1036 mm
Weight: approx. 45 kg



PA RE-1

- ▶ 2 shelf trays
- ▶ 1 open shelf with border
- ▶ 1 base plinth

▶ WxDxH: approx. 762 x 382 x 1036 mm
Weight: approx. 19 kg



PA RE-2

- ▶ 1 open shelf with border
- ▶ 1 T-BOX on case rail
- ▶ 1 M-BOX with handle and lid on Mobilbox plastic slide
- ▶ 1 shelf tray
- ▶ 1 floor drop front

▶ WxDxH: approx. 520 x 382 x 1036 mm
Weight: approx. 18 kg



PA RE-3

- ▶ Spaceframe with integrated ProSafe lashing system
- ▶ 1 shelf tray
- ▶ 2 drawers
- ▶ 1 open shelf with 4 S-BOXEs
- ▶ 1 lifting flap
- ▶ 1 floor lashing rail ProSafe

▶ WxDxH: approx. 762 x 382 x 1036 mm
Weight: approx. 31 kg



PEUGEOT PARTNER FLOOR-WALL

WHEELBASE: 2728 mm | MODEL YEAR 2008 | SLIDING DOOR RIGHT SIDE

2

Step 2: Select the appropriate floor.

SOBOGRIP®-PROTECTIVE FLOOR

► the protective floor for tough conditions

Vehicle type	Wheelbase	Article No.	
► Partner	2728 mm L1	331013232	<ul style="list-style-type: none"> • Floor made of waterproof glued Nordic birch • 9 mm protective floor • Highly scratch and impact resistant • Custom-fit to your vehicle • No drilling of the vehicle floor necessary
► Partner	2728 mm L2	331014401	

SOBOGRIP® PROSAFE FLOOR

► the entire load securing package

Vehicle type	Wheelbase	Article No.	
► Partner	2728 mm L1	1000002395	All benefits of the SoboGrip protective assembly floor + multitude of countersunk lashing possibilities
► Partner	2728 mm L2	1000002396	

3

Step 3: Select the appropriate side cladding.

SOWAFLEX®

► the lightweight & sturdy wall cladding

- Protects the vehicle from the inside against damages
- Highly impact and scratch resistant
- Damp and chemical resistant
- Cut-to-size for all vehicle models
- 100% recyclable honeycomb material
- 60% lighter than wood

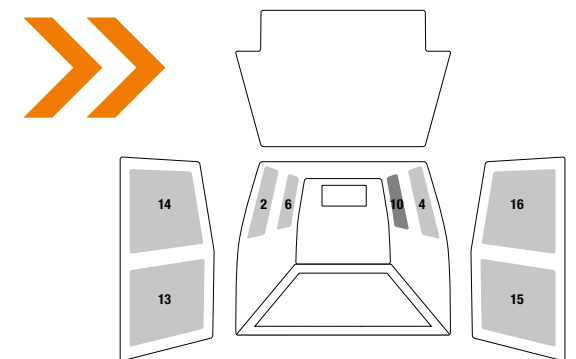
Vehicle type	Wheelbase	Roof	Wall cladding	Article No.
► Partner	2728 mm L1/L2	H1	Side cladding 2/4/6	331013239
► Partner	2728 mm L1/L2	H1	Sliding door top 10	331013243
► Partner	2728 mm L1/L2	H1	Wing door top 14/16	331013245
► Partner	2728 mm L1/L2	H1	Wing door bottom 13/15	1000001685

SOWAAPP®

► The extremely sturdy wall cladding made out of aluminium

- Protects the vehicle interior and serves at the same time as a clever fastening mechanism for a wide range of accessories such as hooks and perforated wall holders, thanks to its perforated system.
- Quickly installed due to fastening with clips and drilling screws on allocated points in vehicle.
- Moisture and chemical resistant
- Cut perfectly to size for your vehicle type.

AVAILABLE FROM
NOVEMBER 2014



Wall cladding selection

Vehicle type	Wheelbase	Roof	Wall cladding	Article No.
► Partner	2728 L1/L2	H1	Side cladding (2/4/6)	1000003181
► Partner	2728 L1/L2	H1	Wing door top (14/16)	1000003151
► Partner	2728 L1/L2	H1	Wing door bottom (13/15)	1000003150

PEUGEOT EXPERT BLOCKS

WHEELBASE: 3000 mm | MODEL YEAR 2007 | SLIDING DOOR RIGHT SIDE

SET OF BOXXes ORIGINAL SORTIMO BOXXes + ADAPTER PLATE

Sortimo's adapter plate turns the L-BOXX into the smallest independent van racking solution for vans. The adapter plate is fastened to the loading area wall and ensures secure hanging of the L-BOXXes.



1

Step 1: Select the suitable equipment.



LEFT SIDE
(DRIVERS SIDE)



RIGHT SIDE
(PASSENGERS SIDE)



EX KU LI-1

- ▶ 4 shelf trays
- ▶ 1 open shelf with 3 wide S-BOXXes
- ▶ 1 open shelf with 2 S-BOXXes and 1 wide S-BOXX
- ▶ 2 open shelves with borders
- ▶ 2 base plinths

▶ WxDxH: approx. 1730 x 382 x 1274 mm
Weight: approx. 53 kg



EX KU LI-2

- ▶ 3 shelf trays
- ▶ 1 open shelf with 2 S-BOXXes and 2 wide S-BOXXes
- ▶ 1 open shelf with 2 L-BOXXes 136
- ▶ 1 open shelf with drop front
- ▶ 1 open shelf with border
- ▶ 1 floor drop front
- ▶ 1 case clamp

▶ WxDxH: approx. 1730 x 382 x 1274 mm
Weight: approx. 55 kg



EX KU LI-3

- ▶ Spaceframe with integrated ProSafe lashing system
- ▶ 2 shelf trays
- ▶ 1 open shelf with 2 S-BOXXes and 2 wide S-BOXXes
- ▶ 1 open shelf with 2 L-BOXXes 136
- ▶ 1 open shelf with drop front
- ▶ 1 open shelf with border
- ▶ 2 drawers
- ▶ 1 lifting flap, 1 case clamp
- ▶ 1 floor lashing rail ProSafe

▶ WxDxH: approx. 1730 x 382 x 1274 mm
Weight: approx. 66 kg



EX KU RE-1

- ▶ 3 shelf trays
- ▶ 1 base plinth

▶ WxDxH: approx. 1004 x 382 x 1274 mm
Weight: approx. 25 kg



EX KU RE-2

- ▶ 1 open shelf with border
- ▶ 1 shelf tray
- ▶ 2 drawers
- ▶ 2 T-BOXXes on case rails
- ▶ 1 metal case on case tray
- ▶ 1 floor drop front

▶ WxDxH: approx. 1004 x 382 x 1274 mm
Weight: approx. 47 kg



EX KU RE-3

- ▶ Spaceframe with integrated ProSafe lashing system
- ▶ 1 shelf tray
- ▶ 1 open shelf with 2 S-BOXXes and 2 wide S-BOXXes
- ▶ 3 drawers
- ▶ 1 LS-BOXX on case tray
- ▶ 1 lifting flap
- ▶ 1 floor lashing rail ProSafe
- ▶ 1 folding work bench with vice
- ▶ 1 storage pocket

▶ WxDxH: approx. 1224 x 382 x 1206 mm
Weight: approx. 70 kg



PEUGEOT EXPERT FLOOR-WALL

WHEELBASE: 3000 mm | MODEL YEAR 2007 | SLIDING DOOR RIGHT SIDE

2

Step 2: Select the appropriate floor.



SOBOGRIP®-PROTECTIVE FLOOR

► the protective floor for tough conditions

Vehicle type	Wheelbase	Article No.	
► Expert	3000 mm	331011141	<ul style="list-style-type: none"> • Floor made of waterproof glued Nordic birch • 9 mm protective floor • Highly scratch and impact resistant • Custom-fit to your vehicle • No drilling of the vehicle floor necessary
► Expert	3122 mm	331011143	

SOBOGRIP® PROSAFE FLOOR

► the entire load securing package

Vehicle type	Wheelbase	Article No.	
► Expert	3000 mm	1000002529	All benefits of the SoboGrip protective assembly floor + multitude of countersunk lashing possibilities
► Expert	3122 mm	1000002530	

3

Step 3: Select the appropriate side cladding.

PLEASE COMPLETE THE ORDER FORM AND FAX IT TO SORTIMO

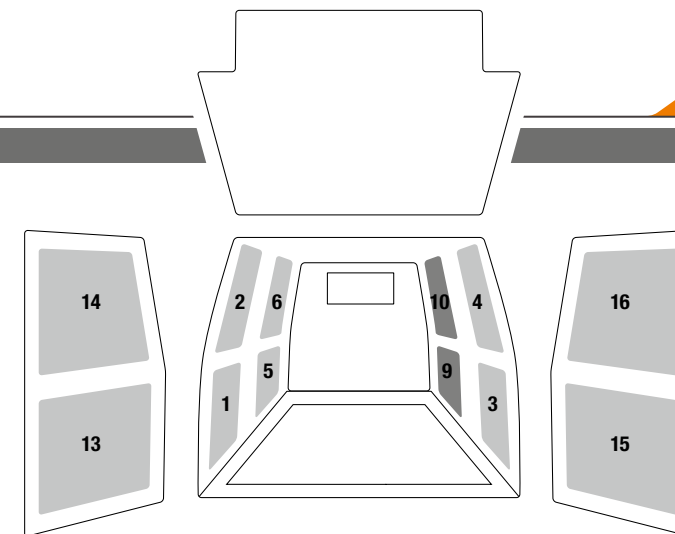
(see second last page)

SOWAFLEX®

► the lightweight & sturdy wall cladding

- Protects the vehicle from the inside against damages
- Highly impact and scratch resistant
- Damp and chemical resistant
- Cut-to-size for all vehicle models
- 100% recyclable honeycomb material
- **60% lighter than wood**

Vehicle type	Wheelbase	Roof	Wall cladding	Article No.
► Expert	3000 mm	H1	Side cladding 2/4/6	331011223
► Expert	3000 mm	H1	Side cladding 1/3/5	331011225
► Expert	all	H1/H2	Sliding door bottom 9	331011232
► Expert	all	H1/H2	Sliding door top 10	331011231
► Expert	all	H1/H2	Wing door bottom 13/15	331011238
► Expert	all	H1/H2	Wing door top 14/16	331011237
► Expert	3122 mm	H1	Side cladding 2/4/6	331011224
► Expert	3122 mm	H1	Side cladding 1/3/5	331011226



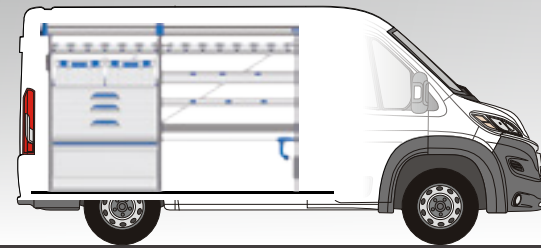
PEUGEOT BOXER BLOCKS

WHEELBASE: 3000 mm | MODEL YEAR 2006 | SLIDING DOOR RIGHT SIDE



1

Step 1: Select the suitable equipment.



LEFT SIDE
(DRIVERS SIDE)



RIGHT SIDE
(PASSENGERS SIDE)



BO KU LI-1

- ▶ 4 shelf trays
- ▶ 3 open shelves with borders
- ▶ 1 open shelf with 4 S-BOXXes and 1 wide S-BOXX
- ▶ 1 open shelf with 2 L-BOXXes 102
- ▶ 2 base plinths

▶ WxDxH: approx. 2214 x 382 x 1495 mm
Weight: approx. 72 kg



BO KU LI-2

- ▶ 4 shelf trays
- ▶ 2 open shelves with 5 S-BOXXes in each and 1 wide S-BOXX
- ▶ 1 open shelf with 2 T-BOXXes and 1 half-height S-BOXX
- ▶ 1 open shelf with 2 L-BOXXes 136
- ▶ 1 open shelf with drop front
- ▶ 2 floor drop fronts

▶ WxDxH: approx. 2214 x 382 x 1495 mm
Weight: approx. 83 kg



BO KU LI-3

- ▶ Spaceframe with integrated ProSafe lashing system
- ▶ 1 Composite long components tray
- ▶ 1 open shelf with 6 half-height S-BOXXes
- ▶ 1 open shelf with 7 half-height S-BOXXes
- ▶ 1 open shelf with 2 L-BOXXes 238
- ▶ 1 shelf tray
- ▶ 1 open shelf with border
- ▶ 1 open shelf with drop-down front
- ▶ 3 drawers
- ▶ 1 lifting flap, 1 case clamp, 1 base plinth, 1 multi functional panel, 1 floor lashing rail ProSafe

▶ WxDxH: approx. 2214 x 382 x 1477 mm
Weight: approx. 98 kg



BO KU RE-1

- ▶ 2 shelf trays
- ▶ 1 open shelf with 3 S-BOXXes and 2 wide S-BOXXes
- ▶ 1 open shelf with border
- ▶ 1 base plinth

▶ WxDxH: approx. 1246 x 382 x 1495 mm
Weight: approx. 38 kg



BO KU RE-2

- ▶ 2 shelf trays
- ▶ 3 drawers
- ▶ 1 L-BOXXes 102 and 1 L-BOXX 238 on case trays
- ▶ 1 floor drop front

▶ WxDxH: approx. 1246 x 382 x 1427 mm
Weight: approx. 52 kg



BO KU RE-3

- ▶ Spaceframe with integrated ProSafe lashing system
- ▶ 1 shelf tray
- ▶ 1 open shelf with 5 S-BOXXes and 1 wide S-BOXX
- ▶ 1 open shelf with border
- ▶ 3 drawers
- ▶ 1 LS-BOXX on case tray
- ▶ 1 lifting flap, 1 base plinth, 1 floor lashing rail ProSafe, 1 folding work bench with vice, 1 storage pocket

▶ WxDxH: approx. 1466 x 382 x 1495 mm
Weight: approx. 87 kg



PEUGEOT BOXER BLOCKS

WHEELBASE: 3450 mm | MODEL YEAR 2006 | SLIDING DOOR RIGHT SIDE

SET OF BOXXes ORIGINAL SORTIMO BOXXes + ADAPTER PLATE

Sortimo's adapter plate turns the L-BOXX into the smallest independent van racking solution for vans. The adapter plate is fastened to the loading area wall and ensures secure hanging of the L-BOXXes.

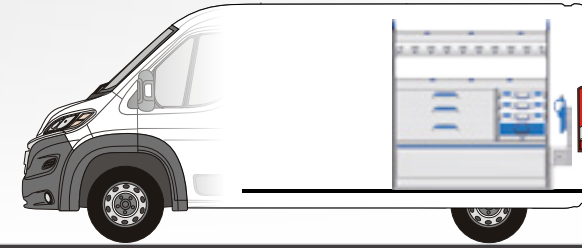


1

Step 1: Select the suitable equipment.



LEFT SIDE
(DRIVERS SIDE)



RIGHT SIDE
(PASSENGERS SIDE)



BO MI LI-1

- ▶ 5 shelf trays
- ▶ 2 open shelves with borders
- ▶ 1 open shelf with 7 S-BOXXes and 1 wide S-BOXX
- ▶ 1 open shelf with 3 T-BOXXes
- ▶ 2 base plinths

▶ WxDxH: approx. 2698 x 382 x 1614 mm
Weight: approx. 88 kg



BO MI LI-2

- ▶ 4 shelf trays
- ▶ 1 open shelf with 3 S-BOXXes and 3 wide S-BOXXes
- ▶ 1 open shelf with drop front
- ▶ 1 open shelf with border
- ▶ 2 T-BOXXes on case rails
- ▶ 1 metal case on case tray
- ▶ 3 drawers
- ▶ 1 floor drop front
- ▶ 1 case clamp

▶ WxDxH: approx. 2698 x 382 x 1614 mm
Weight: approx. 105 kg



BO MI LI-3

- ▶ Spaceframe with integrated ProSafe lasing system
- ▶ 1 Composite long components tray
- ▶ 2 shelf trays
- ▶ 1 open shelf with 3 L-BOXXes 102
- ▶ 1 open shelf with 3 S-BOXXes and 2 wide S-BOXXes
- ▶ 1 open shelf with border
- ▶ 1 T-BOXX on case rail, 1 LS-BOXX on case tray, 3 drawers, 1 lifting flap, 1 base plinth, 1 floor lashing rail ProSafe, 1 case clamp, 1 multi functional panel

▶ WxDxH: approx. 2698 x 382 x 1426 mm
Weight: approx. 109 kg



BO MI RE-1

- ▶ 3 shelf trays
- ▶ 1 open shelf with 3 S-BOXXes and 3 wide S-BOXXes
- ▶ 1 base plinth

▶ WxDxH: approx. 1488 x 382 x 1614 mm
Weight: approx. 43 kg



BO MI RE-2

- ▶ 2 shelf trays
- ▶ 1 open shelf with border
- ▶ 3 drawers
- ▶ 4 T-BOXXes on case rails
- ▶ 1 floor drop front

▶ WxDxH: approx. 1488 x 382 x 1614 mm
Weight: approx. 68 kg



BO MI RE-3

- ▶ Spaceframe with integrated ProSafe lasing system
- ▶ 2 shelf trays
- ▶ 1 open shelf with 9 half-height S-BOXXes
- ▶ 3 drawers
- ▶ 3 T-BOXXes on case rails
- ▶ 1 metal case on case tray
- ▶ 1 lifting flap
- ▶ 1 base plinth
- ▶ 1 floor lasing rail ProSafe
- ▶ 1 folding work bench with vice

▶ WxDxH: approx. 1708 x 382 x 1614 mm
Weight: approx. 105 kg



PEUGEOT BOXER FLOOR-WALL

WHEELBASE: 3000 / 3450 mm | MODEL YEAR 2006 | SLIDING DOOR RIGHT SIDE

2

Step 2: Select the appropriate floor.

SOBOGRIP®-PROTECTIVE FLOOR

► the protective floor for tough conditions

Vehicle type	Wheelbase	Article No.	
▶ Boxer	3000 mm	331010270	<ul style="list-style-type: none"> • Floor made of waterproof glued Nordic birch • 9 mm protective floor • Highly scratch and impact resistant • Custom-fit to your vehicle • No drilling of the vehicle floor necessary
▶ Boxer	3450 mm	331010272	
▶ Boxer	4035 mm	331010274	
▶ Boxer	4035 mm overhang	331010809	

SOBOGRIP® PROSAFE FLOOR

► the entire load securing package

Vehicle type	Wheelbase	Article No.	
▶ Boxer	3000 mm	1000002754	<p>All benefits of the SoboGrip protective assembly floor</p> <p>+ multitude of countersunk lashing possibilities</p>
▶ Boxer	3450 mm	1000002755	
▶ Boxer	4035 mm	1000002756	
▶ Boxer	4035 mm overhang	1000003217	

3

Step 3: Select the appropriate side cladding.

SOWAFLEX®

► the lightweight & sturdy wall cladding

- Protects the vehicle from the inside against damages
- Highly impact and scratch resistant
- Damp and chemical resistant
- Cut-to-size for all vehicle models
- 100% recyclable honeycomb material
- 60% lighter than wood

Vehicle type	Wheelbase	Roof	Wall cladding	Article No.
▶ Boxer	3000 mm	H1	Side cladding 1-6	331010560
▶ Boxer	3000 mm	H2	Side cladding 1-6	1000000148
▶ Boxer	3450 mm	H1	Side cladding 1-6	331010820
▶ Boxer	3450 mm	H2	Side cladding 1-6	331010562
▶ Boxer	3000 mm	H1/H2	Sliding door bottom 9	331010574
▶ Boxer	3450/4035 mm	H1/H2	Sliding door bottom 9	331010568
▶ Boxer	3000 mm	H1/H2	Sliding door top 10	331010570
▶ Boxer	3450/4035 mm	H1/H2	Sliding door top 10	331010569
▶ Boxer	3000/3450/4035 mm	H1/H2	Wing door bottom 13/15	331010572
▶ Boxer	4035 mm	H2	Side cladding 1-6	331010564
▶ Boxer	3000/3450/4035 mm	H1/H2	Wing door top 14/16	331010571
▶ Boxer	4035 mm overhang	H2	Side cladding 1-6	331010851

PLEASE COMPLETE THE ORDER FORM AND FAX IT TO SORTIMO

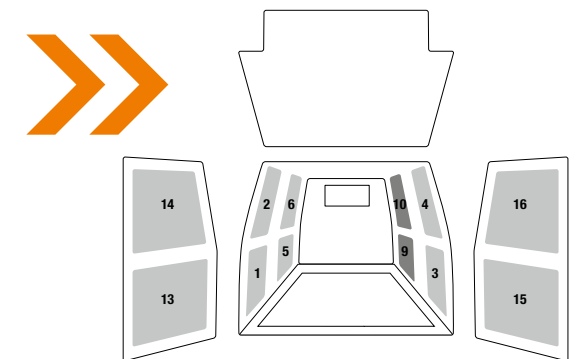
(see second last page)

SOWAAPP®

► The extremely sturdy wall cladding made out of aluminium

- Protects the vehicle interior and serves at the same time as a clever fastening mechanism for a wide range of accessories such as hooks and perforated wall holders, thanks to its perforated system.
- Quickly installed due to fastening with clips and drilling screws on allocated points in vehicle.
- Moisture and chemical resistant
- Cut perfectly to size for your vehicle type.

AVAILABLE FROM
NOVEMBER 2014



Wall cladding selection

Vehicle type	Wheelbase	Roof	Wall cladding	Article No.
▶ Boxer	3000 mm	H1	Side cladding (1-6)	1000003184
▶ Boxer	3000 mm	H2	Side cladding (1-6)	1000003185
▶ Boxer	3450 mm	H1	Side cladding (1-6)	1000003186
▶ Boxer	3450 mm	H2	Side cladding (1-6)	1000003187
▶ Boxer	4035 mm	H2	Side cladding (1-6)	1000003188
▶ Boxer	3000/3450 mm	H1	Wing door top (14/16)	1000003203
▶ Boxer	all	H2	Wing door top (14/16)	1000003204
▶ Boxer	all	H1/H2	Wing door bottom (13/15)	1000003205

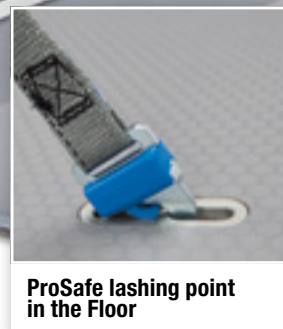
PROSAFE - SAFETY SERIES PRODUCTION



ProSafe in Uprights



ProSafe in the Traverse



ProSafe lashing point in the Floor



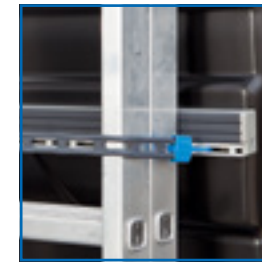
ProSafe as Floor Rails

ProSafe is integrated as a standard in the load safety system from Sortimo.

The lashing belts and load safety nets can be hooked in uprights, frames, traverses and floor rails without difficulty. ProSafe makes load safety possible in no time at all.

Your benefits:

- ✓ You and your freight are safe on the road.
- ✓ You preserve your material.
- ✓ You save on time, weight and money.



ProSafe bungee strap

The ProSafe bungee strap suits perfectly for the fixation of bulky goods in a vehicle.



CargoStopp ProSafe

The CargoStopp allows for reliable load safety on the vehicle safety floor. It is inserted into the ProSafe floor lashing point with its hook.

SOBOGRIP PROSAFE PROTECTIVE FLOOR

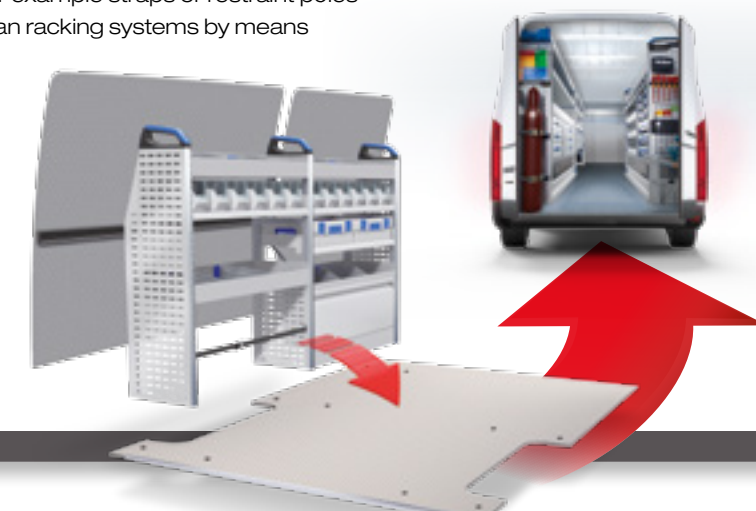
SECURE, TIME SAVING AND SIMPLE!

NEW!

The SoboGrip ProSafe protective floor is an innovative and professional load securing concept from Sortimo which enables a completely flexible lashing of goods on the floor. That way, goods can be secured more quickly, more diversely and more efficiently than ever before. In addition the SoboGrip ProSafe floor is compatible with all ProSafe applications, such as for example straps or restraint poles and enables a quick and easy assembly of Sortimo van racking systems by means of preconfigured connection points.

The Sortimo SoboGrip ProSafe protective floor is the modular base load securing concept

- ✓ highest safety standard,
- ✓ variable applicability,
- ✓ optimum efficiency for your workday!



SOBOECO FLOOR - **NEW!**

THE EXTRA LIGHTWEIGHT PROTECTIVE FLOOR

The **SoboEco floor** is an especially lightweight plastic protective flooring with a corrugated surface structure therefore enhancing grip ability.

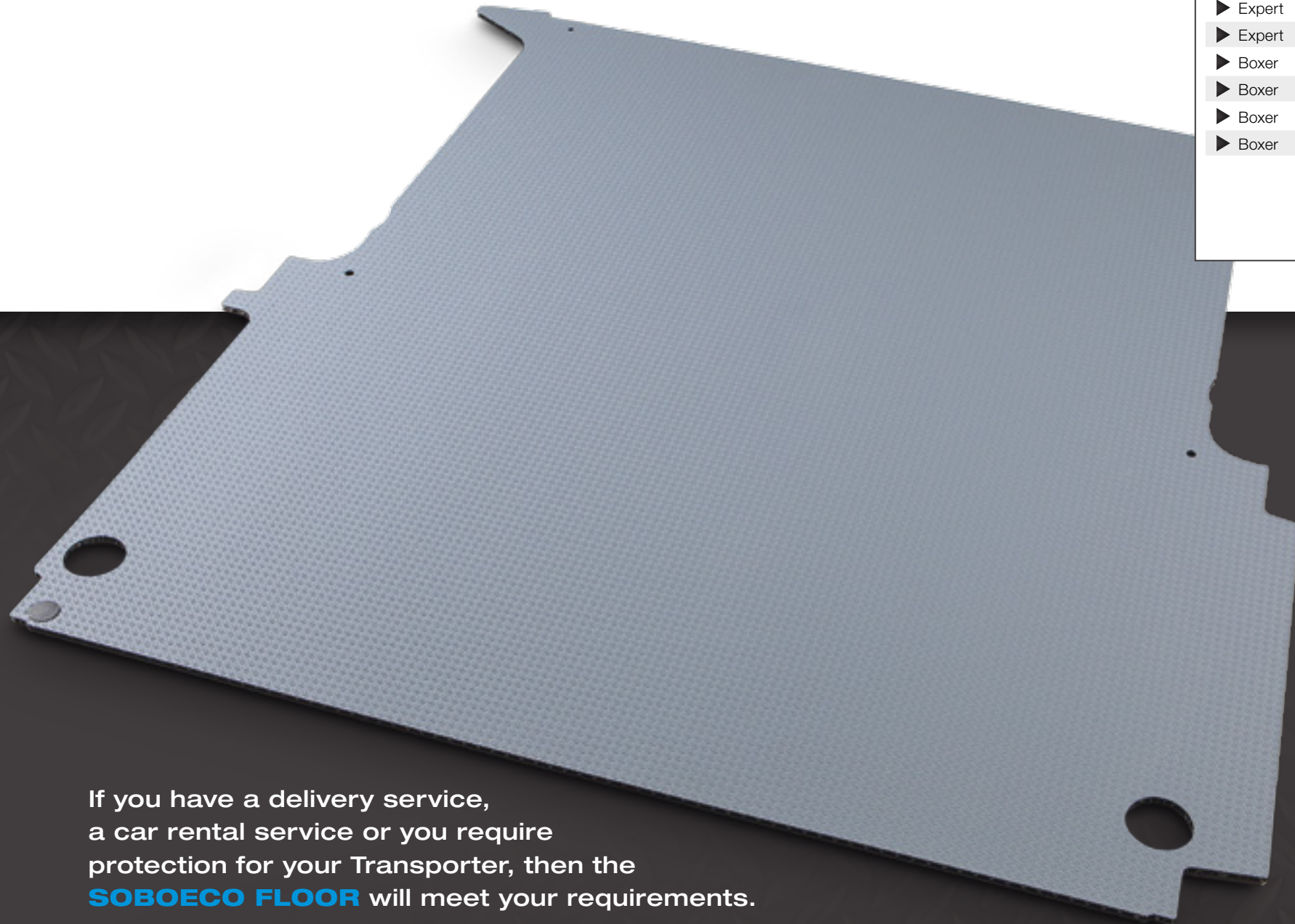
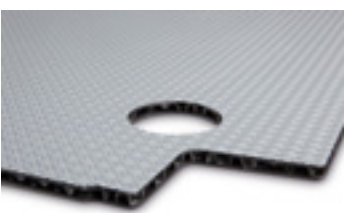
With the SoboEco floor Sortimo offers a solution for everybody that does not require a van racking system but still would like to protect their vehicle against damage and wear and tear.

Quick and simple protection for your vehicle - with the SoboEco floor:

- ✓ extra light, 50% lighter than wood
- ✓ no assembly effort
- ✓ delivered in one piece

THE SOBOECO FLOOR FOR YOUR PEUGEOT:

Vehicle type	Wheelbase	Article No.
▶ Bipper	2513 mm	1000003130
▶ Partner	2728 mm L1	1000003129
▶ Partner	2728 mm L2	1000002571
▶ Expert	3000 mm	1000002964
▶ Expert	3122 mm	1000002572
▶ Boxer	3000 mm	1000003218
▶ Boxer	3450 mm	1000002573
▶ Boxer	4035 mm	1000002574
▶ Boxer	4035 mm overhang	1000002575



MATERIAL PROPERTIES

- ✓ Floor made of plastic
- ✓ Material strength 10.5 mm
- ✓ Extremely slip-proof due to groove structure
- ✓ Moisture and chemical resistant
- ✓ Cut to fit vehicle type exactly



If you have a delivery service, a car rental service or you require protection for your Transporter, then the **SOBOECO FLOOR** will meet your requirements.

TOPSYSTEM FLEXIBLE LOAD SECURITY ON THE VEHICLE ROOF



Ladder lift

The Sortimo ladder lift is suitable for the convenient transport of heavy ladders. Thanks to the gas-pressure spring supported lifting system there is no lifting or lashing of the ladder required. All single and multi-ladders can be easily accessed from the ground. The ladder lift is available in two basic lengths 2.5 and 3 metres.



The transport tube

A perfect addition to the TopSystem. The transport tube is ideal for securely storing long goods and keeping them dry. The cover is lockable.



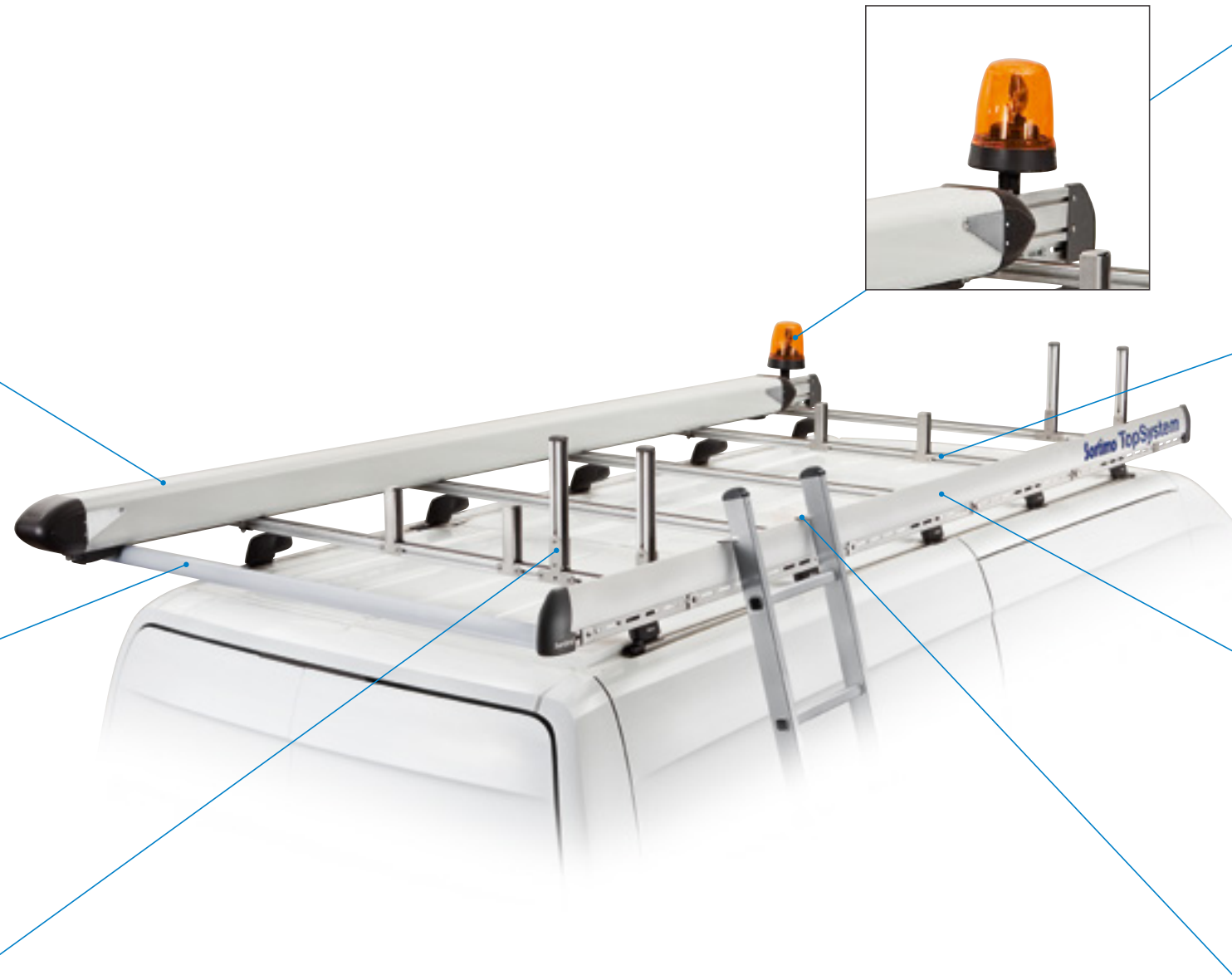
Loading roller

The ideal helper for heavy or large volume goods. Your loading material can be conveniently rolled onto or off the vehicle roof. It is available in the following widths: 500, 1250, 1350, 1450, 1550, 1650 and 1750 mm.



Profile supports which can be variably positioned

The profile supports are responsible for the side wall securing of loads. The height of the profile support can be individually shortened as required. Both profile supports are to be fastened anywhere needed above the aluminium cross members.



Panorama warning beacon

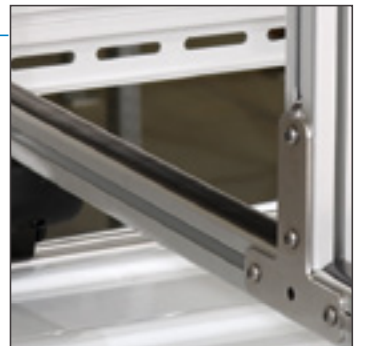
A warning beacon to safeguard a place of operation.

Alternatively the magnetic warning beacon can be attached to the lateral retaining bracket on the TopSystem without the need for any drilling (see picture right).



The profile tracks

Enables easier implementation of additional cross members. It increases stability and carries a vast amount of accessories. The lashing strap buckles can be easily latched to the tracks. The rubber strip on the top prevents the load from slipping.



The side rail

The aluminium side rail increases stability and implements as many cross members as required. Your company logo can be put on to the side rail. A ladder can be leant against the vehicle without damaging it.



Fastening for ladders

To hold the ladder in place and prevent it from slipping sideways, it is possible to mount fixing clamps on the side wall of the vehicle.



Operating platform

Sortimo's finishing touch to a complete product portfolio is the operating platform. The guard rail on the TopSystem secures you even when working at an airy height. The lightweight system is comprised of anodised aluminium and connection elements made from high quality steel and is suitable for all vehicle roofs. The guard rail can be easily folded away after usage.

ORIGINAL ACCESSORIES FROM SORTIMO

With the help of **Sortimo's industry-specific Original Accessories** our Xpress racks can be customised to your individual needs. The convenient perforated aluminium plate for example offers the ideal place to attach hooks and holders for tools and documents.

Moreover, customised partitions and divider sets for drawers or trays, storage pockets, lashing rails, workbenches and much more facilitate the best usage of your vehicle.



<http://www.sortimo.com/brochures>

Discover more in our brochures Original Accessories and Mobile Assortment:

Download on: www.sortimo.com/brochures.
or order via the form on **page 45**.



MOBILE ASSORTMENTS PORTABLE ORDER FROM THE START

Sortimo offers a great variety of **Mobile Assortments in terms of cases and BOXXes**, which can be

combined with one another and are compatible with the van racking solutions.



PARTNER APPS

Not only Sortimo customers are convinced of our BOXXes, but renowned manufacturers as well. They use the **Sortimo L-BOXX** as a transportation box and outer packaging. Thanks to continuous new partners the L-BOXXes become true partner apps with a variety of application options. Regardless from which manufacturer you acquire a Sortimo BOXX, the system stays the same and **is of course compatible with the Sortimo van racking solutions**.

Your benefits:

- ✓ You can easily take the BOXXes with you to the site of operation.
- ✓ You keep order in your vehicle and at your workplace.
- ✓ Your tools, machines, small and spare parts are securely stored in the vehicle.



WHY COMPLICATED, IF YOU CAN ALSO HAVE IT SIMPLECO®?

You are looking for a simple and efficient order solution for your van?

The simpleco shelf system convinces with simple self-assembly and shortest delivery times within three working days.

With just a few movements you have a shelf system with low net weight and sufficient storage space

into which you can of course conveniently integrate all Sortimo BOXXes.

Since the simpleco system works **without floor plate**, you not only save installation time, but in particular weight and costs. At the same time there is enough space for bulky loads.

SIMPLECO BY Sortimo
simple & economic

SIMPLECO® SIMPLE AND ECONOMIC



Innovative shelving design in proven Sortimo quality

With simpleco, you can kit out your vehicle with smart equipment at a great price, without having to compromise on quality.



Delivery within 3 working days throughout Europe.

Your new simpleco equipment will be delivered to you by courier within just 3 working days.



Fits all popular makes of compact van

We have a suitable simpleco solution in stock for all common brands of vans.



No need to be without your vehicle for a minute.

DIY installation means that you can decide when and where to install the equipment. Detailed instructions for easy assembly are provided with each delivery.



Lightweight and easy on the pocket

simpleco gives you top performance at a low price. Its lightweight construction keeps down your fuel costs and your van still retains the same carrying capacity.



You will be delighted with simpleco® – guaranteed!

We are so convinced of the top quality of our simpleco equipment that it comes with a 3 year guarantee from Sortimo.



Choose your own individual simpleco® fittings!

With 12 different shelf options in three widths and two depths for both the left and right side, you can kit out your vehicle exactly how you want it.



No-risk purchase

If you are not totally satisfied with your simpleco system, just return it to us within 14 days of purchase for a full refund.*

* Our General Terms and Conditions apply. See: www.sortimo.com



PEUGEOT BIPPER

Wheelbase 2513 mm, sliding door right side

PEUGEOT BIPPER

Wheelbase 2513 mm, without sliding door



www.simpleco.com

1

MOUNTING KIT SELECT:
(identical for right and left sides)

MOUNTING KIT is essential!
SPC MO FINEBI 08 G Ref. no. 901016826

2

BLOCK CONNECTOR SELECT:

LEFT BLOCK CONNECTOR is essential!
SPC MO FINEBI 08 LI
Ref. no. 901016827

RIGHT BLOCK CONNECTOR is essential!
SPC MO FINEBI 08 RE
Ref. no. 901016828

3

SELECT THE CORRECT BLOCK:

LEFT
(DRIVER SIDE)

RIGHT
(PASSENGER SIDE)



SPC 43 FR-FW-FR
Ref. no. 901016944
Dim.: 1094 x 275 x 657 mm
1 Shelf base 42 with rim
1 Shelf base 43 with rim
1 Shelf tray 43
Weight: 14 kg
Resilience: 45 kg

SPC 23 FR-FW-FR
Ref. no. 901016942
Dim.: 638 x 275 x 657 mm
1 Shelf base 22 with rim
1 Shelf base 23 with rim
1 Shelf tray 23
Weight: 10 kg
Resilience: 45 kg



SPC 43 BB-FW-FR
Ref. no. 901016941
Dim.: 1094 x 275 x 657 mm
1 Shelf base 42 with rim
1 Shelf tray 43
1 Box tray with 6 S-BOXXes
Weight: 14 kg
Resilience: 45 kg

SPC 23 BB-FW-FR
Ref. no. 901016939
Dim.: 638 x 275 x 657 mm
1 Shelf base 22 with rim
1 Shelf tray 23
1 Box tray with 3 S-BOXXes
Weight: 10 kg
Resilience: 45 kg



SPC 44 FR-FW-FR
Ref. no. 901016938
Dim.: 1094 x 379 x 657 mm
1 Shelf base 43 with rim
1 Shelf base 44 with rim
1 Shelf tray 44
Weight: 15 kg
Resilience: 60 kg

SPC 24 FR-FW-FR
Ref. no. 901016936
Dim.: 638 x 379 x 657 mm
1 Shelf base 23 with rim
1 Shelf base 24 with rim
1 Shelf tray 24
Weight: 11 kg
Resilience: 60 kg



SPC 44 BB-FW-FR
Ref. no. 901016935
Dim.: 1094 x 379 x 657 mm
1 Shelf base 43 with rim
1 Shelf tray 44
1 Box tray with 1 L-BOXX 136
and 3 S-BOXXes
Weight: 16 kg
Resilience: 60 kg

SPC 24 BB-FW-FR
Ref. no. 901016933
Dim.: 638 x 379 x 657 mm
1 Shelf base 23 with rim
1 Shelf tray 24
1 Box tray with 1 L-BOXX 136
Weight: 12 kg
Resilience: 60 kg



1

MOUNTING KIT SELECT:
(identical for right and left sides)

MOUNTING KIT is essential!
SPC MO FINEBI 8 GO Ref. no. 100000176

2

BLOCK CONNECTOR SELECT:

LEFT BLOCK CONNECTOR is essential!
SPC MO FINEBI 8 LO
Ref. no. 100000177

RIGHT BLOCK CONNECTOR is essential!
SPC MO FINEBI 8 RO
Ref. no. 100000178

3

SELECT THE CORRECT BLOCK:

LEFT
(DRIVER SIDE)

RIGHT
(PASSENGER SIDE)



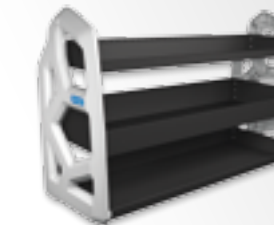
SPC 43 FR-FW-FR
Ref. no. 901016944
Dim.: 1094 x 275 x 657 mm
1 Shelf base 42 with rim
1 Shelf base 43 with rim
1 Shelf tray 43
Weight: 14 kg
Resilience: 45 kg

SPC 43 FR-FW-FR
Ref. no. 901016944
Dim.: 1094 x 275 x 657 mm
1 Shelf base with rim 42
1 Shelf base with rim 43
1 Shelf tray 43
Weight: 14 kg
Resilience: 45 kg



SPC 43 BB-FW-FR
Ref. no. 901016941
Dim.: 1094 x 275 x 657 mm
1 Shelf base 42 with rim
1 Shelf tray 43
1 Box tray with 6 S-BOXXes
Weight: 14 kg
Resilience: 45 kg

SPC 43 BB-FW-FR
Ref. no. 901016941
Dim.: 1094 x 275 x 657 mm
1 Shelf base 42 with rim
1 Shelf tray 43
1 Box tray with 6 S-BOXXes
Weight: 14 kg
Resilience: 45 kg



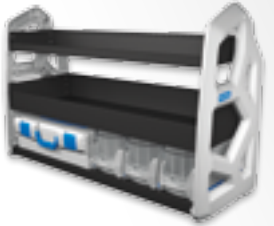
SPC 44 FR-FW-FR
Ref. no. 901016938
Dim.: 1094 x 379 x 657 mm
1 Shelf base 43 with rim
1 Shelf base 44 with rim
1 Shelf tray 44
Weight: 15 kg
Resilience: 60 kg

SPC 44 FR-FW-FR
Ref. no. 901016938
Dim.: 1094 x 379 x 657 mm
1 Shelf base 43 with rim
1 Shelf base 44 with rim
1 Shelf tray 44
Weight: 15 kg
Resilience: 60 kg



SPC 44 BB-FW-FR
Ref. no. 901016935
Dim.: 1094 x 379 x 657 mm
1 Shelf base 43 with rim
1 Shelf tray 44
1 Box tray with 1 L-BOXX 136
and 3 S-BOXXes
Weight: 16 kg
Resilience: 60 kg

SPC 44 BB-FW-FR
Ref. no. 901016935
Dim.: 1094 x 379 x 657 mm
1 Shelf base 43 with rim
1 Shelf tray 44
1 Box tray with 1 L-BOXX 136
and 3 S-BOXXes
Weight: 16 kg
Resilience: 60 kg



SEE ORDER FORM ON THE SECOND LAST PAGE OF THE BROCHURE

SEE ORDER FORM ON THE SECOND LAST PAGE OF THE BROCHURE

PEUGEOT PARTNER

Wheelbase 2728 mm, sliding door right side
Not available for vehicles with ladder flap

PEUGEOT PARTNER L2

Wheelbase 2728 mm, sliding door right side
Not available for vehicles with ladder flap



www.simpleco.com


1 MOUNTING KIT SELECT: (identical for right and left sides) **MOUNTING KIT NOT REQUIRED**

2 BLOCK CONNECTOR SELECT:
LEFT BLOCK CONNECTOR is essential!
SPC MO BEPA 08 LI
Ref. no. 901016829

RIGHT BLOCK CONNECTOR is essential!
SPC MO BEPA 08 RE
Ref. no. 901016830

3 SELECT THE CORRECT BLOCK:
LEFT (DRIVER SIDE)

RIGHT (PASSENGER SIDE)

	<p>SPC 43 FR-FW-FR Ref. no. 901016944 Dim.: 1094 x 275 x 657 mm 1 Shelf base 42 with rim 1 Shelf base 43 with rim 1 Shelf tray 43 Weight: 14 kg Resilience: 45 kg</p>
	<p>SPC 43 BB-FW-FR Ref. no. 901016941 Dim.: 1094 x 275 x 657 mm 1 Shelf base 42 with rim 1 Shelf tray 43 1 Box tray with 6 S-BOXXes Weight: 14 kg Resilience: 45 kg</p>
	<p>SPC 44 FR-FW-FR Ref. no. 901016938 Dim.: 1094 x 379 x 657 mm 1 Shelf base 43 with rim 1 Shelf base 44 with rim 1 Shelf tray 44 Weight: 15 kg Resilience: 60 kg</p>
	<p>SPC 44 BB-FW-FR Ref. no. 901016935 Dim.: 1094 x 379 x 657 mm 1 Shelf base 43 with rim 1 Shelf tray 44 1 Box tray with 1 L-BOXX 136 and 3 S-BOXXes Weight: 16 kg Resilience: 60 kg</p>

	<p>SPC 23 FR-FW-FR Ref. no. 901016942 Dim.: 638 x 275 x 657 mm 1 Shelf base 22 with rim 1 Shelf base 23 with rim 1 Shelf tray 23 Weight: 10 kg Resilience: 45 kg</p>
	<p>SPC 23 BB-FW-FR Ref. no. 901016939 Dim.: 638 x 275 x 657 mm 1 Shelf base 22 with rim 1 Shelf tray 23 1 Box tray with 3 S-BOXXes Weight: 10 kg Resilience: 45 kg</p>
	<p>SPC 24 FR-FW-FR Ref. no. 901016936 Dim.: 638 x 379 x 657 mm 1 Shelf base 23 with rim 1 Shelf base 24 with rim 1 Shelf tray 24 Weight: 11 kg Resilience: 60 kg</p>
	<p>SPC 24 BB-FW-FR Ref. no. 901016933 Dim.: 638 x 379 x 657 mm 1 Shelf base 23 with rim 1 Shelf tray 24 1 Box tray with 1 L-BOXX 136 Weight: 12 kg Resilience: 60 kg</p>

1 MOUNTING KIT SELECT: (identical for right and left sides) **MOUNTING KIT is essential!**
SPC MO BEPA L2 09 Gset Ref. no. 901018357

2 BLOCK CONNECTOR SELECT:
LEFT BLOCK CONNECTOR is essential!
SPC MO BEPA L2 09 LI
Ref. no. 901018358

RIGHT BLOCK CONNECTOR is essential!
SPC MO BEPA L2 09 RE
Ref. no. 901018359

3 SELECT THE CORRECT BLOCK:
LEFT (DRIVER SIDE)

RIGHT (PASSENGER SIDE)

	<p>SPC 43 FR-FW-FR Ref. no. 901016944 Dim.: 1094 x 275 x 657 mm 1 Shelf base 42 with rim 1 Shelf base 43 with rim 1 Shelf tray 43 Weight: 14 kg Resilience: 45 kg</p>
	<p>SPC 43 BB-FW-FR Ref. no. 901016941 Dim.: 1094 x 275 x 657 mm 1 Shelf base 42 with rim 1 Shelf tray 43 1 Box tray with 6 S-BOXXes Weight: 14 kg Resilience: 45 kg</p>
	<p>SPC 44 FR-FW-FR Ref. no. 901016938 Dim.: 1094 x 379 x 657 mm 1 Shelf base 43 with rim 1 Shelf base 44 with rim 1 Shelf tray 44 Weight: 15 kg Resilience: 60 kg</p>
	<p>SPC 44 BB-FW-FR Ref. no. 901016935 Dim.: 1094 x 379 x 657 mm 1 Shelf base 43 with rim 1 Shelf tray 44 1 Box tray with 1 L-BOXX 136 and 3 S-BOXXes Weight: 16 kg Resilience: 60 kg</p>

	<p>SPC 23 FR-FW-FR Ref. no. 901016942 Dim.: 638 x 275 x 657 mm 1 Shelf base 22 with rim 1 Shelf base 23 with rim 1 Shelf tray 23 Weight: 10 kg Resilience: 45 kg</p>
	<p>SPC 23 BB-FW-FR Ref. no. 901016939 Dim.: 638 x 275 x 657 mm 1 Shelf base 22 with rim 1 Shelf tray 23 1 Box tray with 3 S-BOXXes Weight: 10 kg Resilience: 45 kg</p>
	<p>SPC 24 FR-FW-FR Ref. no. 901016936 Dim.: 638 x 379 x 657 mm 1 Shelf base 23 with rim 1 Shelf base 24 with rim 1 Shelf tray 24 Weight: 11 kg Resilience: 60 kg</p>
	<p>SPC 24 BB-FW-FR Ref. no. 901016933 Dim.: 638 x 379 x 657 mm 1 Shelf base 23 with rim 1 Shelf tray 24 1 Box tray with 1 L-BOXX 136 Weight: 12 kg Resilience: 60 kg</p>

SEE ORDER FORM ON THE SECOND LAST PAGE OF THE BROCHURE

SEE ORDER FORM ON THE SECOND LAST PAGE OF THE BROCHURE

SIMPLECO® ACCESSORIES



simpleco
Anti-rattle mat 22-0

Ref. no. 6000001650
Dim.: 474 x 145 mm
For standard shelf and shelf tray 22

simpleco
Anti-rattle mat 42-0

Ref. no. 6000001652
Dim.: 930 x 145 mm
For standard shelf and shelf tray 42

simpleco
Anti-rattle mat 23-0

Ref. no. 6000001653
Dim.: 482 x 242 mm
For standard shelf and shelf tray 23

simpleco
Anti-rattle mat 43-0

Ref. no. 1000002072
Dim.: 941 x 242 mm
For standard shelf and shelf tray 43

simpleco
Anti-rattle mat 24-0

Ref. no. 6000001655
Dim.: 490 x 346 mm
For standard shelf and shelf tray 24

simpleco
Anti-rattle mat 44-0

Ref. no. 1000002073
Dim.: 941 x 246 mm
For standard shelf and shelf tray 44

Labelling card set for S-BOXX standard

Ref. no. 6000000451
1 template with 18 labels



Divider shelf base with rim depth 3

TB FR 03-0
Ref. no. 401010278
Suitable for shelf base with rim 23, 33 and 43



Divider shelf base with rim depth 4

TB FR 04-0
Ref. no. 401010279
Suitable for shelf base with rim 24, 34 and 44

For every divider a divider bracket is needed.

Divider bracket for shelf base with rim

SPC TBH FW
Ref. no. 401002971



Divider for shelf tray depth 3

TB FW 3
Ref. no. 401002730
Suitable for shelf tray 23, 33 and 43



Divider for shelf tray depth 4

TB FW 4
Ref. no. 401002731
Suitable for shelf tray 24, 34 and 44

For each, a front and rear divider bracket is needed.

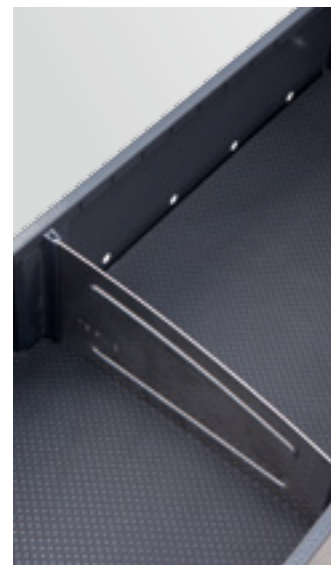
Divider bracket shelf tray front

SPC TBH FW
Ref. no. 401002971



Divider bracket shelf tray rear

SPC TBH FW
Ref. no. 401002973



SEE ORDER FORM ON THE SECOND LAST PAGE OF THE BROCHURE

SORTIMO IN GERMANY

BRANCH OFFICES AND PARTNERS

SORTIMO INTERNATIONAL GmbH **HEADQUARTERS**

Dreilindenstraße 5
86441 Zusmarshausen
Tel. +49 8291 850-0
Fax +49 8291 850-250
Email: info@sortimo.com
www.sortimo.com

Sortimo branch office Berlin

Gartenfelderstraße 15
13599 Berlin
Tel. 030 2005370-0
Fax 030 2005370-19
Email: berlin@sortimo.de

Sortimo branch office Dresden

Hamburger Straße 14
01067 Dresden
Tel. 0351 207362-0
Fax 0351 207362-29
Email: dresden@sortimo.de

Helgo Duckstein

Julius-Brumme-Straße 2a
06406 Bernburg
Tel. 03471 640011
Fax 03471 640066
Mobil 0171 3165813

Lutz Stelzner

04178 Leipzig
Can be contacted via
Dresden office

Jörg Schäfer

02906 Niesky
Can be contacted via
Dresden office

Sortimo branch office Düsseldorf

Bonner Straße 205
40589 Düsseldorf
Tel. 0211 889206-0
Fax 0211 889206-11
Email: duesseldorf@sortimo.de

Sortimo branch office Frankfurt/Main

Waldstraße 74
63128 Dietzenbach
Tel. 06074 91456-0
Fax 06074 91456-22
Email: frankfurt@sortimo.de

Günter Hund

66119 Saarbrücken
Can be contacted via
Frankfurt/Main office

Sortimo branch office Hamburg

Ausschläger Allee 178
20539 Hamburg
Tel. 040 571954-0
Fax 040 571954-54
Email: hamburg@sortimo.de

Manfred Meyer

Am Ems-Vechte-Kanal 32
48531 Nordhorn
Tel. 05921 3042325
Fax 05921 3045263
Mobil 0160 4759281

Sortimo branch office Munich

Landshuter Straße 13
85716 Unterschleißheim
Tel. 089 37004560
Fax 089 37004589
Email: muenchen@sortimo.de

Manfred Rieder

84028 Landshut
Can be contacted via
München office

Christian Schmaus

83278 Traunstein
Can be contacted via
München office

Sortimo branch office Nürnberg

Benno-Strauß-Straße 37
90763 Fürth
Tel. 0911 48035-35
Fax 0911 48035-36
Email: nuernberg@sortimo.de

Sortimo branch office Stuttgart

Nürtinger Straße 50
73257 Köngen
Tel. 07024 9726-0
Fax 07024 9726-10
Email: stuttgart@sortimo.de

Michael Burkhardt

88699 Frickingen
Can be contacted via
Stuttgart office

Sortimo branch office Zusmarshausen

Dreilindenstraße 5
86441 Zusmarshausen
Tel. 08291 850-149
Fax 08291 850-253
Email: zusmarshausen@sortimo.de



Sortimo partner Bad Dübén

Rolf Frömmichen
Hauptstraße 10
04849 Authausen
Tel. 034243 26234
Fax 034243 22114
Email: sortimo-froemmichen@gmx.de

Sortimo partner Berlin

IFP GmbH
Buckower Chaussee 85
12277 Berlin
Tel. 030 72016005
Fax 030 89726753
Email: ifp-berlin@t-online.de

Peter Herrmann

14542 Werder (Havel)
Can be contacted via
Sortimo partner Berlin

Sortimo partner Bremen, Braunschweig, Celle

Wilfried Klatt GmbH
Burger Landstraße 1 a
29229 Celle
Im Finigen 15
28832 Achim
Tel. 04202 521730
Fax 04202 521732
Email: info@klatt-sortimo.de

Jürgen Nemeč

28195 Bremen
27283 Verden
49356 Diepholz
29614 Soltau
Can be contacted via
Sortimo partner Bremen

Thorsten Iseke

38100 Braunschweig
38440 Wolfsburg
38350 Helmstedt
Can be contacted via
Sortimo partner Bremen

Benjamin Klatt

29227 Celle
21335 Lüneburg
29525 Uelzen
29451 Dannenberg
Can be contacted via
Sortimo partner Bremen

Sortimo partner Brüggen

Bartsch + Feikes GmbH
Weihersfeld 18
41379 Brüggen
Tel. 02163 9997-0
Fax 02163 9997-77
Email: info@bartsch-feikes.de

Sortimo partner Erfurt

Firma Gregor
Inh. Mario Gregor
Kalkreife 14
99085 Erfurt
Tel. 0361 550440-0
Fax 0361 550440-10
Email: info@gregor-erfurt.de

Sortimo partner Essen

Heiko Dworak GmbH & Co.
Verwaltungs KG
Johanniskirchstraße 98
45329 Essen
Tel. 0201 747008-1
Fax 0201 747008-3
Email: hdworak@sortimo-essen.de

Sortimo partner Fulda

Josef Leibold GmbH
Philipp-Reis-Straße 19-21
36093 Künzell
Tel. 0661 31019
Fax 0661 36697
Email: hojo@leibold-karosseriebau.de

Sortimo partner Gera

PFK Eickmeier GmbH & Co. KG
Wiesenring 8
07554 Korbußen
Tel. 036602 241-0
Fax 036602 241-23
Email: pfk-eickmeier@t-online.de

Sortimo partner Gerstetten

Klaus Fries
Amselweg 5
89547 Gerstetten
Tel. 07323 3907
Fax 07323 921867
Email: sortimo-station-gerstetten@t-online.de

Sortimo partner Halle

Gruber Fahrzeugbau GmbH
Geltestr. 3
06184 Kabelsketal OT Dölbau
Tel. 034602 4364-0
Fax 034602 4364-13
Email: info@gruber-sortimo.de

Sortimo partner Hannover

HIG GmbH
Molkereistraße 33
30826 Garbsen
Tel. 05131 4829 930
Fax 05131 48299359
Email: vertrieb@hig-hannover.de

Gernot Jünke

31785 Hameln
37154 Northeim
38640 Goslar
Can be contacted via
Sortimo partner Hannover

Joachim Lieke

30000 Hannover
31100 Hildesheim
Can be contacted via
Sortimo partner Hannover

Christian Horstmann

31582 Nienburg
Can be contacted via
Sortimo partner Station Hannover

Sortimo partner Heilbronn

Klaus & Hartmut Twestel GbR
Sägmühlstraße 45
74930 Ittlingen
Tel. 07266 911555
Fax 07266 911557
Mobil 0173 3257383
Email: stoeckel.fahrzeugbau@t-online.de

Sortimo partner Kassel-Göttingen

Peter Welsch Handelsvertretung GmbH
Ellenbacher Straße 6
34123 Kassel
Tel. 0561 524300
Fax 0561 5296810
Email: info@sortimo-kassel.de

Sortimo partner Koblenz

L & S GmbH & Co.KG
Hinter der Jungenstraße 9
56218 Mülheim-Kärlich
Tel. 0261 98888310
Fax 0261 988883120
Email: info@ls-fahrzeugeinrichtungen.de

Sortimo partner Magdeburg

Lohanser GmbH
Geschwister-Scholl-Straße 147
39218 Schönebeck (Elbe)
Tel. 03928 4102-76
Fax 03928 4102-77
Email: info@lohanser.de

Sortimo partner Mainz

soflex GmbH
An der Krimm 25
55124 Mainz
Tel. 06131 1444266
Fax 06131 1444445
Email: sortimo.schwerin@t-online.de

Sortimo partner Mannheim

soflex GmbH
Schildkrötstraße 29
68199 Mannheim
Tel. 0621 84254-0
Fax 0621 84254-29
Email: contact@soflex-ma.de

Jürgen Herrmann

64289 Darmstadt
Can be contacted via
Sortimo partner Mannheim

Sortimo partner Kaiserslautern

soflex GmbH
Kaiserstrasse 74
67661 Kaiserslautern
Tel. 0631 3507545
Fax 0631 3507776
Email: lang@soflex-ma.de

Sortimo partner Marl

Gahlen Fahrzeugeinrichtungen
und Anhänger Vertriebs GmbH
Boschstraße 6
45770 Marl
Tel. 02365 81911
Fax 02365 508161
Email: gahlen-sortimo@t-online.de

Sortimo partner Ostwestfalen-Lippe

THL GmbH
Stadttheider Straße 1-3
33609 Bielefeld
Tel. 0521 30443-0
Fax 0521 30443-22
Email: info@thl-bielefeld.de

Sortimo partner Pforzheim

Sortimo Station Pforzheim
HS Fahrzeug- und
Betriebsinrichtungen GmbH
Hoheneichstraße 48
75217 Birkenfeld
Tel. 07231 80019-0
Fax 07231 80019-19
Email: info@sspf.de

Denis Bugert

76532 Baden-Baden
76131 Karlsruhe
75365 Calw
71083 Herrenberg
72250 Freudenstadt
Can be contacted via
Sortimo partner Pforzheim

Sortimo partner Schweinfurt

Karl-Heinz Maar
Kreuzstraße 2
97532 Uchtelhausen
Tel. 09720 1882
Fax 09720 3923
Email: karl-heinz.maar@t-online.de

Sortimo partner Schwerin

HGS Fahrzeug- u.
Betriebsinrichtungen GmbH
Lindenweg 1
19075 Pampow/Schwerin
Tel. 03865 829-0
Fax 03865 82922
Email: sortimo.schwerin@t-online.de

Marko Morawietz

17489 Greifswald
Can be contacted via
Sortimo partner Schwerin

Falko Maier

18059 Rostock
Can be contacted via
Sortimo partner Schwerin

Sven Lück

17033 Neubrandenburg
Can be contacted via
Sortimo partner Schwerin

Sortimo partner Solingen

Manfred Becker
Kyllmannweg 29
42699 Solingen
Tel. 0212 320001
Fax 0212 320003
Email: info@sortimo-solingen.de

Sortimo partner Teningen

SiTraFa GmbH & Co. KG
Siemensstraße 16
79331 Teningen-Nimburg
Tel. 07663 913080
Fax 07663 913089
Email: bzoller@sitrafa.de

Sortimo partner Weser-Ems

C.A. Brill GmbH
Stadttheider Straße 7
48527 Nordhorn
Tel. 05921 7800-341
Fax 05921 7800-10
Email: m.jansen@ca-brill.de

Sortimo partner Wetzlar

Auto-Schach GmbH & Co. KG
Industriestraße 15-17
35582 Wetzlar-Dutenhofen
Tel. 0641 97901-0
Fax 0641 97901-10
Email: info@auto-schach.de

INFO-CHECK

Simply fill out the form and fax it to Sortimo +49 8291 850-269

Please send me further information and brochures free of charge and without obligation:

- Mobile Assortment Brochure
- Sortimo Original Accessories Brochure
- I would like to have a consultation to find out more about Sortimo van racking solutions. Please call me back to arrange an appointment with no obligation.

My telephone number is: _____

- I would like to subscribe to the Sortimo Newsletter free of charge.

My e-mail address is: _____



Company name

Surname, first name

Street

Postcode City

Tel.

Fax

e-mail

Line of business

Date

Signature (company stamp)

WE ARE ALWAYS THERE FOR YOU!
YOUR CONTACT TO SORTIMO

Call us in Germany:

Tel. +49 8291 850-499

Fax +49 8291 850-269

E-Mail: direct@sortimo.com

www.sortimo.com/direct



Thank you for your interest and we look forward to hearing from you!



Sortimo International GmbH
Dreilindenstraße 5 · 86441 Zusmarshausen · Germany
Tel. +49 8291 850-499 · Fax +49 8291 850-269 · www.sortimo.com



For more information
WWW.SORTIMO.COM

Sortimo[®]
Intelligent Mobility

Sortimo International GmbH
Dreilindenstraße 5 · 86441 Zusmarshausen · GERMANY
Phone: +49 8291 850-499 · Fax: +49 8291 850-269
E-mail: info@sortimo.com · www.sortimo.com